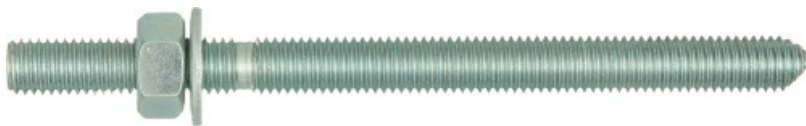


R-STUDS metriniai įsriegiami strypai, nerūdijančio plieno klasė 1.4529 HCR, plokščias antgalis

[Lithuanian]: Threaded rod made out of an austenitic special steel 1.4529 HCR classified in the highest corrosion resistance class



Informacija apie gaminį

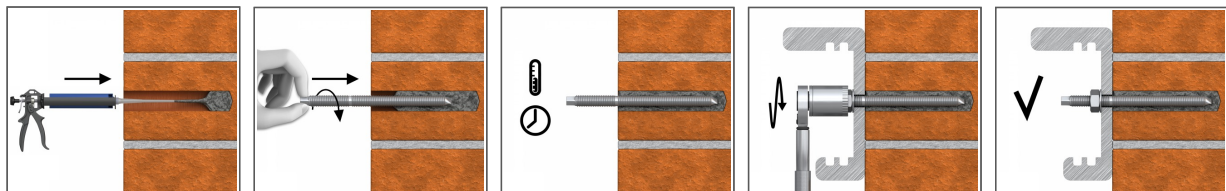
Savybės ir privalumai

- [Lithuanian]: Stainless steel 1.4529 HCR is characterized by its high resistance to local corrosion phenomena, such as crevice corrosion, pitting, or chlorine-induced stress corrosion cracking
- [Lithuanian]: It demonstrates excellent mechanical properties and can be used in a wide temperature range
- [Lithuanian]: In contact with sulphuric or phosphoric acid, or chlorides and salts, it offers excellent resilience and resistance to wear
- Itin našūs cheminiai inkarai didelėms apkrovoms

Naudojimas

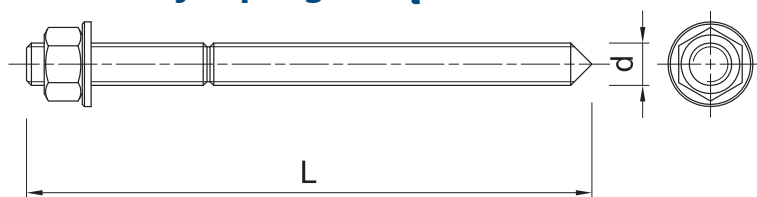
- [Lithuanian]: Shipbuilding
- [Lithuanian]: Offshore technology
- [Lithuanian]: Swimming pool technology
- [Lithuanian]: Plants in the chemical industry
- [Lithuanian]: Heat exchangers and evaporators
- [Lithuanian]: Flue gas desulfurization plants
- [Lithuanian]: Tanks for aggressive chemical products
- [Lithuanian]: Tunnel construction

[Lithuanian]: Installation guide



1. Išgręžkite atitinkamo skersmens ir gylio angą
2. [Lithuanian]: Clean the hole thoroughly with hand pump and hole brush
3. Jei reikia, įdėkite tinklinę movą.
4. [Lithuanian]: Fill hole with the required resin to the recommended fill level. (Follow the relevant instructions for the resin product)
5. [Lithuanian]: Insert the threaded stud slowly and with a slight twisting motion, until the required embedment depth is reached
6. Nelieskite, kol praeis dervos stingimo laikas.
7. Praėjus reikiamam surišimo laikui įdėkite tvirtinamą elementą, poveržlę ir veržlę. Prisukite sujungimus reikiamu momentu

Informacija apie gaminį



Dydis	Gaminys	Inkaras		Tvirtinamas elementas		
		Skersmuo	Ilgis	Didžiausias storis $t_{fiks.}$:		Skylės skersmuo
		d	L	[Lithuanian]: hnom, 6d	[Lithuanian]: hnom, 12d	d_f
		[mm]	[mm]	[mm]	[mm]	[mm]
M8	R-STUDS-08110HCRFL	8	110	52	4	9
M10	R-STUDS-10130HCRFL	10	130	58	-	12
M12	R-STUDS-12160HCRFL	12	160	73	1	14
M16	R-STUDS-16190HCRFL	16	190	75	-	18
M20	R-STUDS-20260HCRFL	20	260	117	-	22

Logistikos duomenys

Dydis	Gaminys	Inkaras		Kiekis (vnt.)			Svoris (kg)			Brūkšninis kodas
		Skersmuo [mm]	Ilgis [mm]	Vienetinė pakuotė	Sudėtinė pakuotė	Padėklas	Vienetinė pakuotė	Sudėtinė pakuotė	Padėklas	
M8	R-STUDS-08110HCRFL	8	110	10	10		0.44	0.44		5906675475059
M10	R-STUDS-10130HCRFL	10	130	10	10		0.81	0.81		5906675475066
M12	R-STUDS-12160HCRFL	12	160	10	10	5760	1.37	1.37	819.1	5906675468310
M16	R-STUDS-16190HCRFL	16	190	10	10		2.9	2.9		5906675475073
M20	R-STUDS-20260HCRFL	20	260	5	5		3.0	3.0		5906675475080