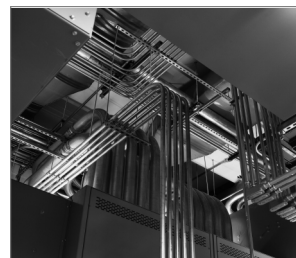


R-DCA-ST-II Mazo para anclajes de manga con rosca interna - 2ª generación

Mazo



[Spanish]: Approvals and Reports

- ETA-13/0584



Información del producto

Características y ventajas

- [Spanish]: Unique tool for installing R-DCA and R-DCL anchors
- Montaje manual de anclajes con rosca interna.
- [Spanish]: The ergonomic rubber grip ensures a comfortable installation

Aplicaciones

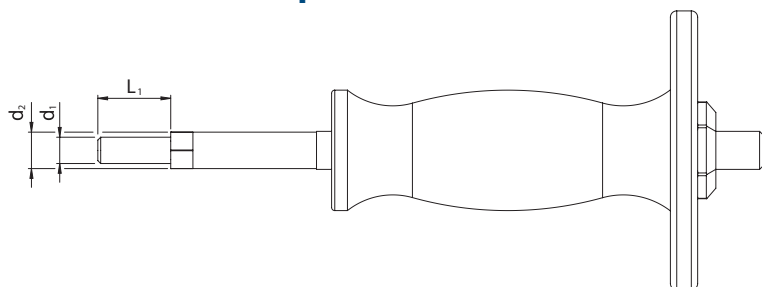
- Montaje de anclajes con rosca interna

[Spanish]: Installation guide



1. Instale en ancla en el orificio usando un mazo y un martillo

Información del producto



| Medida | Código de producto | Diámetro | | Longitud |
|--------|--------------------|----------|-------|----------|
| | | d_1 | d_2 | L_1 |
| | | [mm] | [mm] | [mm] |
| M6 | R-DCA-ST-II-06 | 5 | 7.5 | 14.8 |
| M8 | R-DCA-ST-II-08-25 | 6.6 | 9.5 | 17 |
| | R-DCA-ST-II-08 | 6.6 | 9.5 | 18 |
| M10 | R-DCA-ST-II-10 | 8.3 | 11.5 | 23 |
| | R-DCA-ST-II-10-25 | 8.3 | 11.5 | 17 |
| | R-DCA-ST-II-10-30 | 8.3 | 11.5 | 18 |
| M12 | R-DCA-ST-II-12-25 | 10.2 | 14.5 | 17 |
| | R-DCA-ST-II-12 | 10.2 | 14.5 | 28 |
| M16 | R-DCA-ST-II-16 | 13.5 | 19.5 | 33 |

Especificaciones logísticas

| Código de producto | Longitud [mm] | Cantidad [ud.] | | | Peso [kg] | | | Códigos de barras |
|---------------------------------|---------------|-----------------|-------------------|--------|-----------------|-------------------|--------|-------------------|
| | | Envase unitario | Embalaje exterior | Paleta | Envase unitario | Embalaje exterior | Paleta | |
| R-DCA-ST-II-06 ¹⁾ | 14.8 | 1 | 10 | 560 | 0.24 | 2.4 | 162.7 | 5906675423449 |
| R-DCA-ST-II-08-25 ¹⁾ | 17 | 1 | 10 | 560 | 0.31 | 3.1 | 202.8 | 5906675430775 |
| R-DCA-ST-II-08 ¹⁾ | 18 | 1 | 10 | 560 | 0.28 | 2.8 | 185.7 | 5906675423456 |
| R-DCA-ST-II-10 ¹⁾ | 23 | 1 | 10 | 560 | 0.33 | 3.3 | 213.1 | 5906675423463 |
| R-DCA-ST-II-10-25 ¹⁾ | 17 | 1 | 10 | 560 | 0.36 | 3.6 | 230.7 | 5906675430782 |
| R-DCA-ST-II-10-30 ¹⁾ | 18 | 1 | 10 | 560 | 0.33 | 3.3 | 213.1 | 5906675455341 |
| R-DCA-ST-II-12-25 ¹⁾ | 17 | 1 | 10 | 560 | 0.45 | 4.5 | 281.7 | 5906675432090 |
| R-DCA-ST-II-12 ¹⁾ | 28 | 1 | 10 | 560 | 0.41 | 4.1 | 261.3 | 5906675423470 |
| R-DCA-ST-II-16 ¹⁾ | 33 | 1 | 10 | 240 | 0.62 | 6.2 | 177.6 | 5906675423487 |

1) ETA-13/0584