

DRA-01 Nylon self-drill fixing for drywall

Self-drilling light-duty nylon fixing for use in plasterboard sheets and gypsum fibreboards.



Product information

Features and benefits

- Flange prevents accidental push through in plasterboard.
- Can be used in single and double thickness plasterboard.
- Short length ideally suited for dry lined walls.
- Very durable nylon material with fibre glass and special drilling point guarantees fast installation
- Installation with a standard screwdriver means that no special tools are necessary.
- Recommended screw diameter: 3.5 - 4.2 mm
- Must only be used with screw provided.

Applications

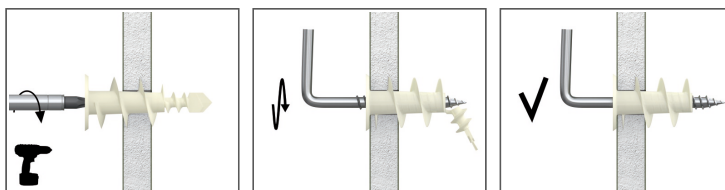
- Ideal for installation of sockets, light switches and other electrical fittings
- Shelves and bathroom accessories on standard plasterboard.
- Installation of ceiling fixtures, such as light fittings
- Fixing light shelving, brackets and hooks
- Pictures
- Wood battens

Base materials

Suitable for use in

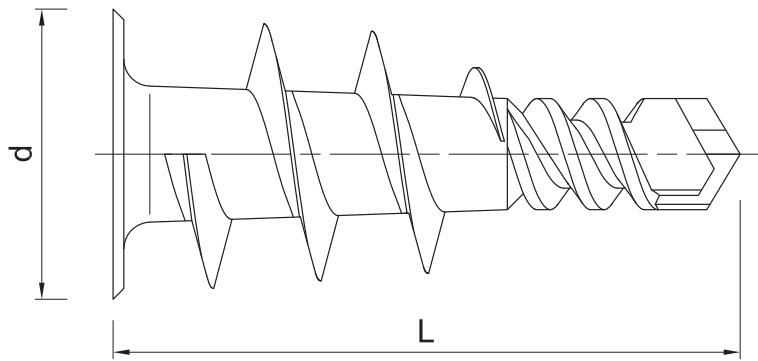
- Plasterboard
- Gypsum Fibreboards

Installation guide



1. Using a PZ2 screwdriver, push fixing point firmly into the board until thread engages.
2. Maintaining a firm pressure, screw in fixing until flush with the base material.
3. Place fixture in position, insert screw and tighten until secure.

Product information



Product Code	Plug		Screw		Fixture	
	Diameter	Length	Diameter	Length	Max. thickness	Hole diameter
	d	l	D	L	t _{fix}	d _f
	[mm]					
R-DRA-01	14	32	-	-	-	-
R-DRA-01PLUS	14	22	3.9	32	12	5

Installation data

Size				DRA-01(PLUS)
Min. substrate thickness	h _{min}	[mm]		9.5
Min. installation depth	h _{nom}	[mm]		9.5
Min. spacing	s _{min}	[mm]		22
Min. edge distance	c _{min}	[mm]		22
Fixing diameter	d	[mm]		14

Basic performance data

Substrate		Plasterboard min. 9.5 mm	Plasterboard min. 12.5 mm
CHARACTERISTIC LOAD F_{Rk}			
DRA-01 (PLUS)	[kN]	0.23	0.25
DESIGN LOAD F_{Rd}			
DRA-01 (PLUS)	[kN]	0.09	0.10
RECOMMENDED LOAD F_{rec}			
DRA-01 (PLUS)	[kN]	0.06	0.07

Product commercial data

Product Code	Plug	Screw	Quantity [pcs]			Weight [kg]			Bar Codes
	Diameter [mm]	Length [mm]	Box	Outer	Pallet	Box	Outer	Pallet	
R-DRA-01	14	-	100	1600	38400	0.21	3.4	110.6	5906675161044
R-DRA-01PLUS	14	32	100	1600	38400	0.47	7.6	212.0	5906675161068