

R-STUDS Metric Threaded Rods - Steel Class 8.8

Threaded rod 8.8 grade steel for use with bonded anchors.



Product information

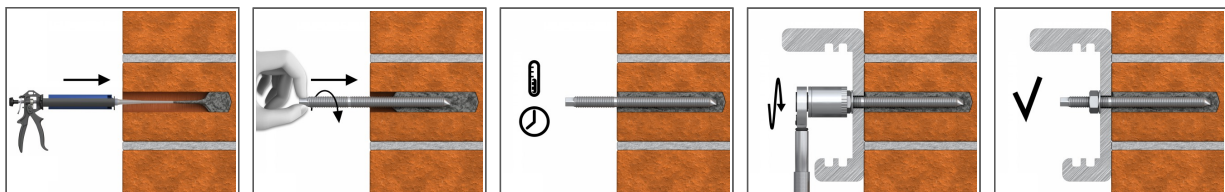
Features and benefits

- Threaded rod made of carbon steel class 8.8 is suitable for outdoor use and in damp conditions
- Can be post-installed through fixture in some cases. (Consult technical advisory service)
- Hexagonal head for convenient use with torque wrench

Applications

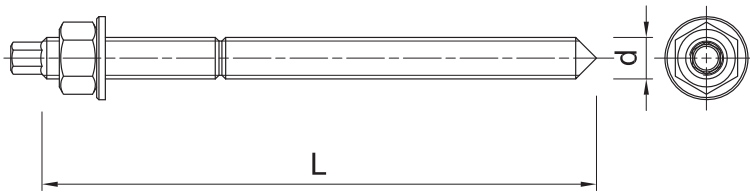
- Fastening with bonded anchors
- Balustrading & handrails
- Barriers
- Cable trays
- Consoles
- Curtain walling
- Formwork support systems
- Heavy machinery
- Lamps
- Safety barriers
- Road Signs
- Railings
- Public seating

Installation guide



1. Drill hole to the required diameter and depth for stud size being used.
2. Clean the hole thoroughly with hand pump and hole brush
3. If required, insert the mesh sleeve into position
4. Fill hole with the required resin to the recommended fill level. (Follow the relevant instructions for the resin product)
5. Insert the threaded stud slowly and with a slight twisting motion, until the required embedment depth is reached
6. Leave undisturbed until curing time of resin has elapsed
7. Attach fixture and tighten the nut to the required installation torque

Product information



Size	Product Code	Anchor		Fixture		
		Diameter	Length	Max. thickness t_{fix} for:		Hole diameter
		d	L	$h_{nom, 6d}$	$h_{nom, 12d}$	d_f
		[mm]	[mm]	[mm]	[mm]	[mm]
M8	R-STUDS-08110-88	8	110	52	4	9
M10	R-STUDS-10130-88	10	130	58	-	12
M12	R-STUDS-12160-88	12	160	73	1	14
	R-STUDS-12300-88	12	300	213	141	14
M16	R-STUDS-16190-88	16	190	75	-	18
	R-STUDS-16220-88	16	220	105	9	18
M20	R-STUDS-20220-88	20	220	77	-	22
	R-STUDS-20260-88	20	260	117	-	22
	R-STUDS-20300-88	20	300	157	37	22
M24	R-STUDS-24300-88	24	300	128	-	26
M30	R-STUDS-30380-88	30	380	166	-	32

Product commercial data

Size	Product Code	Anchor		Quantity [pcs]			Weight [kg]			Bar Codes
		Diameter [mm]	Length [mm]	Box	Outer	Pallet	Box	Outer	Pallet	
M8	R-STUDS-08110-88	8	110	10	10	5040	0.42	0.42	241.7	5906675076171
M10	R-STUDS-10130-88	10	130	10	10	10000	0.77	0.77	804.0	5906675076188
M12	R-STUDS-12160-88	12	160	10	120	5040	1.33	15.9	698.3	5906675076195
	R-STUDS-12300-88	12	300	10	10		2.2	2.2		5906675401874
M16	R-STUDS-16190-88	16	190	10	10	3000	2.8	2.8	879.9	5906675076201
	R-STUDS-16220-88	16	220	10	10	1990	3.2	3.2	666.8	5906675060514
M20	R-STUDS-20220-88	20	220	10	10		4.9	4.9		5906675487052
	R-STUDS-20260-88	20	260	5	5	1500	2.9	2.9	908.4	5906675076218
	R-STUDS-20300-88	20	300	5	30		3.4	20.5		5906675085562
M24	R-STUDS-24300-88	24	300	5	5		4.9	4.9		5906675076225
M30	R-STUDS-30380-88	30	380	2	2		3.9	3.9		5906675076232