

R-STUDS Metric Threaded Rods - Steel Class A2, Flat Head

A2 stainless steel threaded rod for outdoor and damp conditions



Product information

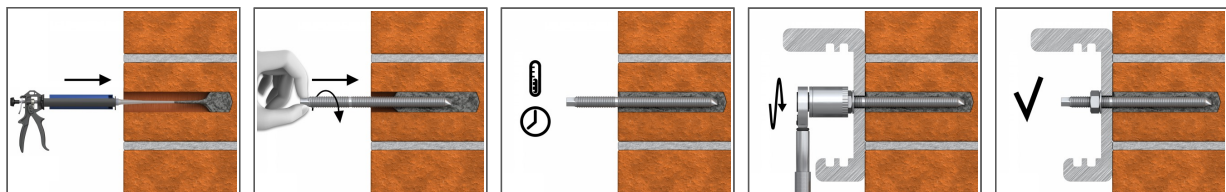
Features and benefits

- Threaded rod made of A2 stainless steel for outdoor use and in damp conditions
- High-performance bonded anchors offer high load-bearing capacities
- Can be post-installed through fixture in some cases. (Consult technical advisory service)
- Flat head for quick manual installation without a setting tool
- Necessary for use in copy-eco system - reinforcement of suspension rod in large-panel construction systems

Applications

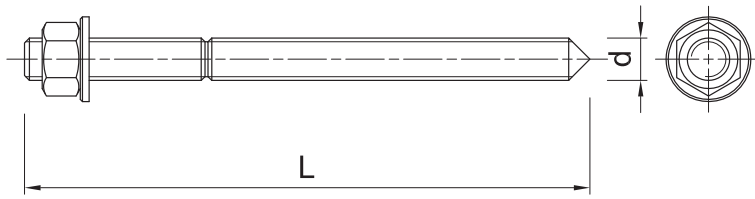
- Fastening with bonded anchors
- Supports
- Barriers
- Racking systems
- Consoles
- Railings
- Window elements
- Scaffolding
- Heavy machinery
- Facades
- Copy-eco systems
- Cable trays
- Curtain walling
- Formwork support systems

Installation guide



1. Drill hole to the required diameter and depth for stud size being used.
2. Clean the hole thoroughly with hand pump and hole brush
3. If required, insert the mesh sleeve into position
4. Fill hole with the required resin to the recommended fill level. (Follow the relevant instructions for the resin product)
5. Insert the threaded stud slowly and with a slight twisting motion, until the required embedment depth is reached
6. Leave undisturbed until curing time of resin has elapsed
7. Attach fixture and tighten the nut to the required installation torque

Product information



Size	Product Code	Anchor		Fixture		
		Diameter	Length	Max. thickness t_{fix} for:		Hole diameter
		d	L	$h_{nom, 6d}$	$h_{nom, 12d}$	d_f
		[mm]	[mm]	[mm]	[mm]	[mm]
M10	R-STUDS-10330-A2FL	10	330	258	198	12
	R-STUDS-12140A2FL	12	140	53	-	14
M12	R-STUDS-12200-A2FL	12	200	113	41	14
	R-STUDS-12220-A2FL	12	220	133	61	14
	R-STUDS-12250-A2FL	12	250	163	91	14
	R-STUDS-12260-A2FL	12	260	173	101	14
	R-STUDS-12280-A2FL	12	280	193	121	14
	R-STUDS-12330-A2FL	12	330	243	171	14
	R-STUDS-12350-A2FL	12	350	263	191	14
	R-STUDS-12380-A2FL	12	380	293	221	14
	R-STUDS-12400-A2FL	12	400	313	241	14
	R-STUDS-12440-A2FL	12	440	353	281	14
	R-STUDS-12490-A2FL	12	490	403	331	14
	R-STUDS-12500-A2FL	12	500	413	341	14
	R-STUDS-12550-A2FL	12	550	463	391	14

Product commercial data

Size	Product Code	Anchor		Quantity [pcs]			Weight [kg]			Bar Codes
		Diameter [mm]	Length [mm]	Box	Outer	Pallet	Box	Outer	Pallet	
M10	R-STUDS-10330-A2FL	10	330	10	10		1.70	1.70		5906675436074
	R-STUDS-12140A2FL	12	140	10	10	1000	1.21	1.21	150.6	5906675343839
M12	R-STUDS-12200-A2FL	12	200	10	10	3200	1.66	1.66	562.5	5906675262505
	R-STUDS-12220-A2FL	12	220	10	10	3200	1.81	1.81	607.6	5906675262512
	R-STUDS-12250-A2FL	12	250	10	10	4200	2.1	2.1	891.0	5906675262451
	R-STUDS-12260-A2FL	12	260	10	10		0.50	0.50		5906675345482
	R-STUDS-12280-A2FL	12	280	1	1	25	0.25	0.25	36.1	5906675201825
	R-STUDS-12330-A2FL	12	330	10	10	2200	2.6	2.6	602.4	5906675262529
	R-STUDS-12350-A2FL	12	350	10	10	1300	2.7	2.7	386.7	5906675267395
	R-STUDS-12380-A2FL	12	380	10	10	2200	3.0	3.0	695.7	5906675262536
	R-STUDS-12400-A2FL	12	400	10	10	400	3.2	3.2	157.5	5906675034256
	R-STUDS-12440-A2FL	12	440	10	10	2400	3.5	3.5	867.6	5906675011486
	R-STUDS-12490-A2FL	12	490	10	10		5.0	5.0		5906675345499
	R-STUDS-12500-A2FL	12	500	10	10	640	5.0	5.0	350.0	5906675337579
	R-STUDS-12550-A2FL	12	550	1	10	100	0.44	4.4	74.0	5906675217420