

R-STUDS Metric Threaded Rods - Steel Class 8.8, Flat Head

Threaded rod 8.8 grade steel for use with bonded anchors.



Product information

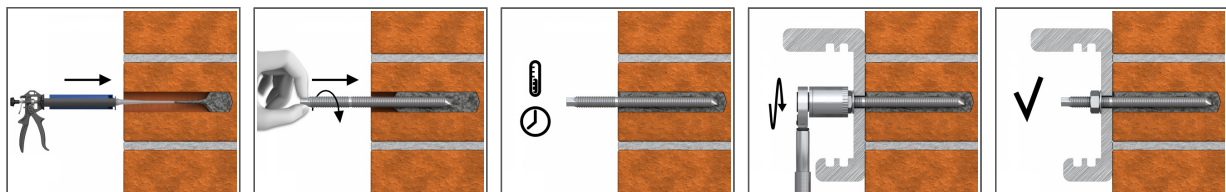
Features and benefits

- Threaded rod made of carbon steel class 8.8 is suitable for outdoor use and in damp conditions
- Possibility of removal when used with internally threaded socket
- Can be post-installed through fixture in some cases. (Consult technical advisory service)
- No screwdriver needed for installation

Applications

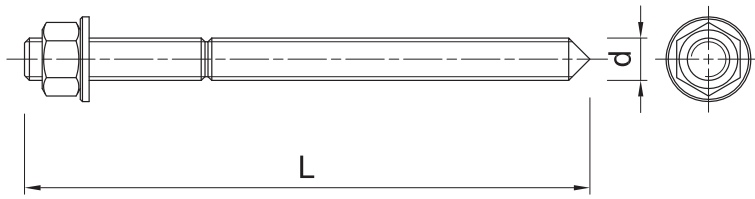
- Fastening with bonded anchors
- Balustrading & handrails
- Barriers
- Cable trays
- Consoles
- Curtain walling
- Formwork support systems
- Heavy machinery
- Lamps
- Safety barriers
- Road Signs
- Railings
- Public seating
- Copy-eco systems

Installation guide



1. Drill hole to the required diameter and depth for stud size being used.
2. Clean the hole thoroughly with hand pump and hole brush
3. If required, insert the mesh sleeve into position
4. Fill hole with the required resin to the recommended fill level. (Follow the relevant instructions for the resin product)
5. Insert the threaded stud slowly and with a slight twisting motion, until the required embedment depth is reached
6. Leave undisturbed until curing time of resin has elapsed
7. Attach fixture and tighten the nut to the required installation torque

Product information



Size	Product Code	Anchor		Fixture		
		Diameter	Length	Max. thickness t_{fix} for:		Hole diameter
		d	L	$h_{nom, 6d}$	$h_{nom, 12d}$	d_f
		[mm]	[mm]	[mm]	[mm]	[mm]
M8	R-STUDS-08130-88FL	8	130	72	24	9
M10	R-STUDS-10130-88FL	10	130	58	-	12
	R-STUDS-10190-88FL	10	190	118	58	12
M12	R-STUDS-12260-88FL	12	260	173	101	14
M16	R-STUDS-16150-88FL	16	150	35	-	18
	R-STUDS-1619088FL	16	190	75	-	18
	R-STUDS-16200-88FL	16	200	85	-	18
	R-STUDS-16220-88FL	16	220	105	9	18
	R-STUDS-16260-88FL	16	260	145	49	18
	R-STUDS-1630088FL	16	300	185	89	18
	R-STUDS-16450-88FL	16	450	335	239	18
M20	R-STUDS-16500-88FL	16	500	385	289	18
	R-STUDS-20260-88FL	20	260	117	-	22
	R-STUDS-20350-88FL	20	350	207	87	22
	R-STUDS-20450-88FL	20	450	307	187	22
	R-STUDS-20500-88FL	20	500	357	237	22
M24	R-STUDS-20600-88FL	20	600	457	337	22
	R-STUDS-24300-88FL	24	300	128	-	26
M24	R-STUDS-24600-88FL	24	600	428	284	26
	R-STUDS-30380-88FL	30	380	166	-	32
M30	R-STUDS-30710-88FL	30	710	496	316	32

Product commercial data

Size	Product Code	Anchor		Quantity [pcs]			Weight [kg]			Bar Codes
		Diameter [mm]	Length [mm]	Box	Outer	Pallet	Box	Outer	Pallet	
M8	R-STUDS-08130-88FL	8	130	10	10		0.51	0.51		5906675349787
M10	R-STUDS-10130-88FL	10	130	10	10		0.77	0.77		5906675490946
	R-STUDS-10190-88FL	10	190	10	10		1.10	1.10		5906675490953
M12	R-STUDS-12260-88FL	12	260	10	10	500	2.1	2.1	136.0	5906675055565
M16	R-STUDS-16150-88FL	16	150	10	10		2.1	2.1		5906675442907
	R-STUDS-1619088FL	16	190	10	10		2.8	2.8		5906675325057
	R-STUDS-16200-88FL	16	200	10	10		3.6	3.6		5906675490960
	R-STUDS-16220-88FL	16	220	10	10	2560	3.3	3.3	869.4	5906675315737
	R-STUDS-16260-88FL	16	260	10	10		3.8	3.8		5906675437415
	R-STUDS-1630088FL	16	300	10	10		4.4	4.4		5906675325033
	R-STUDS-16450-88FL	16	450	10	10	700	16.0	16.0	1150.0	5906675435855

Product commercial data

Size	Product Code	Anchor		Quantity [pcs]			Weight [kg]			Bar Codes
		Diameter [mm]	Length [mm]	Box	Outer	Pallet	Box	Outer	Pallet	
M16	R-STUDS-16500-88 FL	16	500	1	1		1.40	1.40		5906675431208
M20	R-STUDS-20260-88 FL	20	260	10	10		5.9	5.9		5906675476377
	R-STUDS-20350-88 FL	20	350	1	1	150	0.75	0.75	142.5	5906675393742
	R-STUDS-20450-88 FL	20	450	1	1		1.20	1.20		5906675089119
	R-STUDS-20500-88 FL	20	500	1	1		1.92	1.92		5906675425337
	R-STUDS-20600-88 FL	20	600	1	1		1.60	1.60		5906675419343
M24	R-STUDS-24300-88 FL	24	300	10	10		9.7	9.7		5906675484983
	R-STUDS-24600-88 FL	24	600	1	1		1.92	1.92		5906675425313
M30	R-STUDS-30380-88 FL	30	380	10	10		19.4	19.4		5906675474700
	R-STUDS-30710-88 FL	30	710	5	5		0.26	0.26		5906675487045