

## R-STUDS Metric Threaded Rods - Steel Class A4, Flat Head

A4 stainless steel threaded rod for outdoor and damp conditions



### Product information

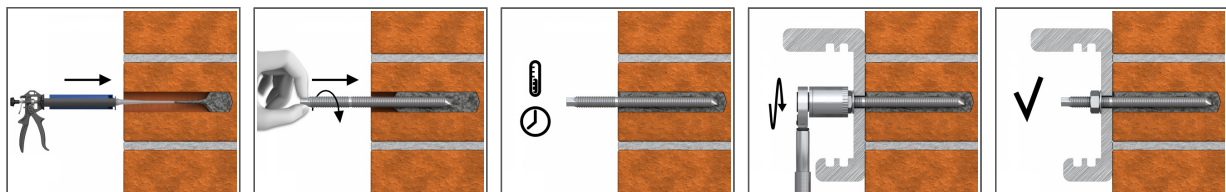
#### Features and benefits

- High-performance bonded anchors offer high load-bearing capacities
- A4 stainless steel offers improved load-bearing capacities (relative to standard carbon steel)
- Can be post-installed through fixture in some cases. (Consult technical advisory service)
- Flat head for quick manual installation without a setting tool

#### Applications

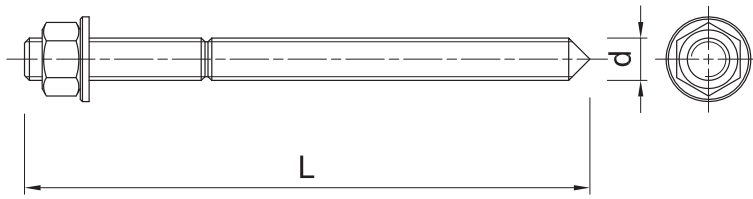
- Satellite dishes
- Balustrading & handrails
- Safety barriers
- Starter bars
- Gates, wickets, fences
- Lamps
- Stadium seating
- Gratings
- Fixing electrical boxes, sanitary ware, cable trunking, etc.

### Installation guide



1. Drill hole to the required diameter and depth for stud size being used.
2. Clean the hole thoroughly with hand pump and hole brush
3. If required, insert the mesh sleeve into position
4. Fill hole with the required resin to the recommended fill level. (Follow the relevant instructions for the resin product)
5. Insert the threaded stud slowly and with a slight twisting motion, until the required embedment depth is reached
6. Leave undisturbed until curing time of resin has elapsed
7. Attach fixture and tighten the nut to the required installation torque

## Product information



Size	Product Code	Anchor		Fixture		
		Diameter	Length	Max. thickness $t_{fix}$ for:		Hole diameter
		d	L	$h_{nom, 6d}$	$h_{nom, 12d}$	$d_f$
		[mm]	[mm]	[mm]	[mm]	[mm]
M8	R-STUDS-08110-A4FL	8	110	52	4	9
M10	R-STUDS-10130-A4FL	10	130	58	-	12
	R-STUDS-10170-A4FL	10	170	98	38	12
	R-STUDS-10240-A4FL	10	240	168	108	12
	R-STUDS-10300-A4FL	10	300	228	168	12
M12	R-STUDS-12140A4FL	12	140	53	-	14
	R-STUDS-12160-A4FL	12	160	73	1	14
	R-STUDS-12190-A4FL	12	190	103	31	14
	R-STUDS-12220-A4FL	12	220	133	61	14
M16	R-STUDS-16190-A4FL	16	190	75	-	18
	R-STUDS-16200-A4FL	16	200	85	-	18
	R-STUDS-16220-A4FL	16	220	105	9	18
	R-STUDS-16260-A4FL	16	260	145	49	18
M20	R-STUDS-20260-A4FL	20	260	117	-	22
	R-STUDS-20800-A4FL	20	800	657	537	22
M24	R-STUDS-24300-A4FL	24	300	128	-	26
	R-STUDS-24350-A4FL	24	350	178	34	26
M30	R-STUDS-30440-A4FF	30	440	226	46	32

## Product commercial data

Size	Product Code	Anchor		Quantity [pcs]			Weight [kg]			Bar Codes
		Diameter [mm]	Length [mm]	Box	Outer	Pallet	Box	Outer	Pallet	
M8	R-STUDS-08110-A4FL	8	110	10	10	4200	0.43	0.43	210.2	5906675260440
M10	R-STUDS-10130-A4FL	10	130	10	10	9600	0.80	0.80	799.9	5906675260457
	R-STUDS-10170-A4FL	10	170	10	10	530	1.02	1.02	83.8	5906675261409
	R-STUDS-10240-A4FL	10	240	10	10	1000	13.3	13.3	1355.0	5906675417851
	R-STUDS-10300-A4FL	10	300	10	10		2.2	2.2		5906675422787
M12	R-STUDS-12140A4FL	12	140	10	10	1000	1.50	1.50	180.0	5906675343846
	R-STUDS-12160-A4FL	12	160	10	120	1800	1.37	16.5	277.3	5010445001727
	R-STUDS-12190-A4FL	12	190	10	10	5760	1.62	1.62	962.5	5906675261393
	R-STUDS-12220-A4FL	12	220	10	10		1.77	1.77		5906675467535
M16	R-STUDS-16190-A4FL	16	190	10	10	960	2.9	2.9	309.3	5906675260471
	R-STUDS-16200-A4FL	16	200	10	10		3.3	3.3		
	R-STUDS-16220-A4FL	16	220	10	10	1000	3.3	3.3	361.6	5906675267425
	R-STUDS-16260-A4FL	16	260	10	10	240	41.0	41.0	1014.0	5906675176468

## Product commercial data

Size	Product Code	Anchor		Quantity [pcs]			Weight [kg]			Bar Codes
		Diameter [mm]	Length [mm]	Box	Outer	Pallet	Box	Outer	Pallet	
M20	R-STUDS-20260-A4 FL	20	260	5	5	1600	3.0	3.0	1002.2	5906675260488
	R-STUDS-20800-A4 FL	20	800	1	1	420	1.85	1.85	807.0	5906675449708
M24	R-STUDS-24300-A4 FL	24	300	2	2	770	2.1	2.1	841.2	5906675260495
	R-STUDS-24350-A4 FL	24	350	10	10		9.7	9.7		5906675491738
M30	R-STUDS-30440-A4 FF	30	440	1	1	100	2.3	2.3	260.0	5906675390437