

RAWLNUT Flexi Plug

Easy-to-install plug giving exceptional resistance to vibration and corrosion.



Product information

Features and benefits

- Resistant to vibration and corrosion.
- Ideal for unknown substrates and irregular or oversized holes.
- Rubber flange sets flush at the surface which guarantee tight fixing.
- Made from synthetic rubber for more severe corrosion environment.
- Bonded brass insert.

Applications

- Lighting
- Shelves
- Trunking
- Cable trays
- Electrical fittings
- Brackets, grips and hooks
- Pictures

Base materials

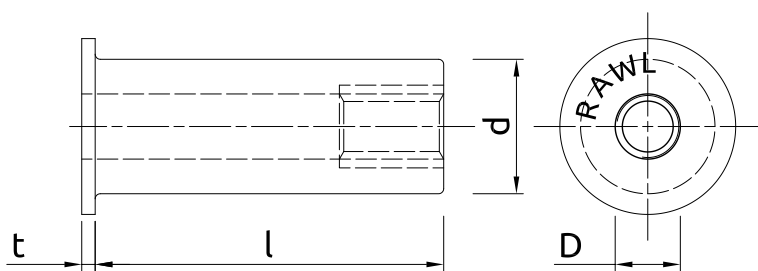
Suitable for use in

- Solid Brick
- Hollow Brick
- Vertically-perforated Clay Block
- Lightweight Concrete Block
- Hollow Lightweight Concrete Block
- Aerated Concrete Block
- Plasterboard
- Chipboard
- Oriented Strand Board
- PVC Profile

Installation guide

1. Drill appropriate hole. For solid materials, drill hole to length of screw and fixture thickness. Clean out hole and remove sharp edges to avoid damaging fixing.
2. Insert the fixing up to its flange.
3. Place fixture in position. Insert screw and tighten to compress sleeve and form a secure fixing. Do not overtighten.
4. Work equally well in uniform or irregularly shaped holes.

Product information



Size	Product Code	Flange thickness	Plug		Screw
			Diameter	Length	Diameter
		t	d	l	D
[mm]					
M4	R-RNT-M4/12	1.4	8	12.6	4
	R-RNT-M4/24	1.2	8	24	4
M5	R-RNT-M5/14	1.3	10	14.1	5
	R-RNT-M5/26	1.3	10	26.1	5
	R-RNT-M5/40	1.3	10	39.8	5
M6	R-RNT-M6/16	1.3	13	16	6
	R-RNT-M6/27	2	13	26.7	6
	R-RNT-M6/35	1.3	13	35	6
	R-RNT-M6/50	1.2	13	50	6
M8	R-RNT-M8/28	5	16	27.9	8
	R-RNT-M8/30	1.2	18	30	8
	R-RNT-M8/50	2	18	50	8
M10	R-RNT-M10/55	1.3	20	55	10
M12	R-RNT-M12/80	1.3	24	76.5	12

Product commercial data

Product Code	Plug	Quantity [pcs]			Weight [kg]			Bar Codes
	Diameter [mm]	Box	Outer	Pallet	Box	Outer	Pallet	
R-RNT-M4/12	8	50	50	21600	0.07	0.07	60.7	5010445090936
R-RNT-M4/24	8	50	50	21600	0.30	0.30	159.6	5010445091230
R-RNT-M5/14	10	50	50	21600	0.11	0.11	77.5	5010445091841
R-RNT-M5/26	10	50	50	21600	0.30	0.30	159.6	5010445092244
R-RNT-M5/40	10	50	50	21600	0.30	0.30	159.6	5010445093104
R-RNT-M6/16	13	50	50	21600	0.20	0.20	114.2	5010445093555
R-RNT-M6/27	13	50	50	21600	0.30	0.30	159.6	5010445093852
R-RNT-M6/35	13	50	50	21600	0.32	0.32	168.2	5010445094156
R-RNT-M6/50	13	50	50	21600	0.48	0.48	235.2	5010445094378
R-RNT-M8/28	16	50	50	19200	0.51	0.51	225.8	5906675088013
R-RNT-M8/30	18	50	50	19200	0.60	0.60	260.4	5010445094750
R-RNT-M8/50	18	50	50	21600	0.78	0.78	367.0	5010445095337
R-RNT-M10/55	20	25	25	10800	0.70	0.70	332.4	5010445095948
R-RNT-M12/80	24	20	20	8640	0.85	0.85	398.1	5010445096549