

## R-STUDS Metric Threaded Rods - Steel Class 5.8, Flat Head

Threaded rod 5.8 grade steel for use with bonded anchors.



### Product information

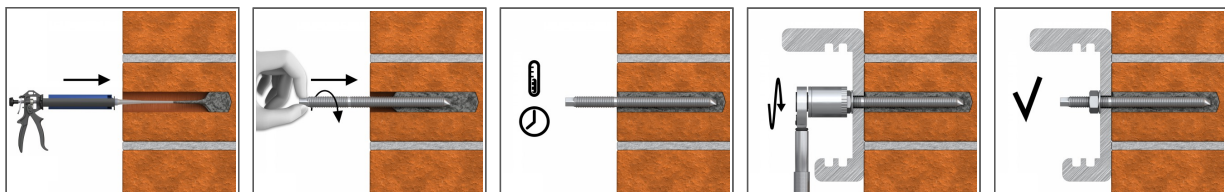
#### Features and benefits

- High-performance bonded anchors offer high load-bearing capacities
- Suitable for use with special mesh sleeves in hollow substrates.
- Flat head for quick manual installation without a setting tool
- Can be post-installed through fixture in some cases. (Consult technical advisory service)
- Possibility of removal when used with internally threaded socket

#### Applications

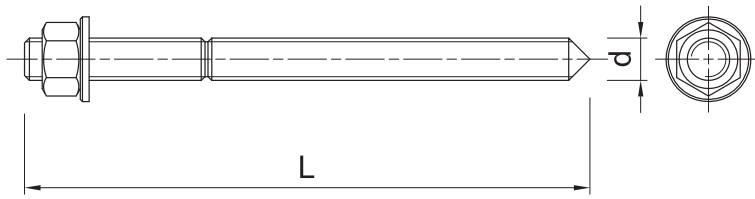
- Fastening with bonded anchors
- Supports
- Barriers
- Racking systems
- Consoles
- Railings
- Window elements
- Scaffolding
- Heavy machinery

### Installation guide



1. Drill hole to the required diameter and depth for stud size being used.
2. Clean the hole thoroughly with hand pump and hole brush
3. If required, insert the mesh sleeve into position
4. Fill hole with the required resin to the recommended fill level. (Follow the relevant instructions for the resin product)
5. Insert the threaded stud slowly and with a slight twisting motion, until the required embedment depth is reached
6. Leave undisturbed until curing time of resin has elapsed
7. Attach fixture and tighten the nut to the required installation torque

## Product information



Size	Product Code	Anchor		Fixture		
		Diameter	Length	Max. thickness $t_{fix}$ for:		Hole diameter
		d	L	$h_{nom, 6d}$	$h_{nom, 12d}$	$d_f$
		[mm]	[mm]	[mm]	[mm]	[mm]
M8	R-STUDS-08110-FL	8	110	52	4	9
	R-STUDS-08160-FL	8	160	102	54	9
M10	R-STUDS-10080-FL	10	80	8	-	12
	R-STUDS-10130-FL	10	130	58	-	12
	R-STUDS-10170-FL	10	170	98	38	12
	R-STUDS-10280-FL	10	280	208	148	12
M12	R-STUDS-12110-FL	12	110	23	-	14
	R-STUDS-12160-FL	12	160	73	1	14
	R-STUDS-12190-FL	12	190	103	31	14
	R-STUDS-12220-FL	12	220	133	61	14
M16	R-STUDS-12260-FL	12	260	173	101	14
	R-STUDS-16190-FL	16	190	75	-	18
	R-STUDS-16220-FL	16	220	105	9	18
M20	R-STUDS-16260-FL	16	260	145	49	18
	R-STUDS-20260-FL	20	260	117	-	22
	R-STUDS-20300-FL	20	300	157	37	22
M24	R-STUDS-20350-FL	20	350	207	87	22
	R-STUDS-24300-FL	24	300	128	-	26
M30	R-STUDS-30380-FL	30	380	166	-	32

## Product commercial data

Size	Product Code	Anchor		Quantity [pcs]			Weight [kg]			Bar Codes
		Diameter [mm]	Length [mm]	Box	Outer	Pallet	Box	Outer	Pallet	
M8	R-STUDS-08110-FL	8	110	10	10	5040	0.43	0.43	245.7	5010445001468
	R-STUDS-08160-FL	8	160	10	10	2030	0.43	0.43	117.3	5906675260372
M10	R-STUDS-10080-FL	10	80	10	10		0.65	0.65		5906675460840
	R-STUDS-10130-FL	10	130	10	10	5040	0.77	0.77	419.6	5010445001482
	R-STUDS-10170-FL	10	170	10	10	3780	1.01	1.01	412.5	5906675260389
	R-STUDS-10280-FL	10	280	10	10		1.90	1.90		5906675464244
M12	R-STUDS-12110-FL	12	110	10	10		1.29	1.29		5906675452586
	R-STUDS-12160-FL	12	160	10	10	7200	1.35	1.35	1001.3	5010445001512
	R-STUDS-12190-FL	12	190	10	120	4800	1.56	18.7	779.3	5906675262338
	R-STUDS-12220-FL	12	220	10	120	4560	1.79	21.5	848.1	5906675261706
M16	R-STUDS-12260-FL	12	260	10	10	1100	2.1	2.1	259.7	5906675260396
	R-STUDS-16190-FL	16	190	10	10	3840	2.9	2.9	1127.5	5010445001550
	R-STUDS-16220-FL	16	220	10	10	1920	3.3	3.3	660.3	5906675260402
M20	R-STUDS-16260-FL	16	260	10	10	1920	3.8	3.8	759.6	5906675260419
	R-STUDS-20260-FL	20	260	6	6	1728	3.6	3.6	1062.5	5010445001598
	R-STUDS-20300-FL	20	300	5	30	270	3.4	20.6	215.4	5906675262468
M24	R-STUDS-20350-FL	20	350	5	5	960	4.0	4.0	802.8	5906675234793
	R-STUDS-24300-FL	24	300	2	2	770	2.0	2.0	779.2	5906675240794
M30	R-STUDS-30380-FL	30	380	1	1	500	1.94	1.94	999.0	5906675234816