

## SM Interaset

Interaset fixing for permanent anchorages in cavity walls. Zinc-plated metal fixing with metric screw



### Product information

#### Features and benefits

- Due to extensive range the SM INTERSET is suitable for board building materials with a thickness 2-38mm, it allows for a number of different applications.
- The fixing can be installed using normal screwdriver, or installation pliers.
- One piece stamping, with integral thread and flange for increased reliability.
- Hinged legs designed to maximise load-bearing capacity
- Large contact area of expanded arms increases load-bearing capacity and security.
- Integral anti-rotation lugs
- Fixtures can be removed and re-fitted.
- Combination head screw supplied

#### Applications

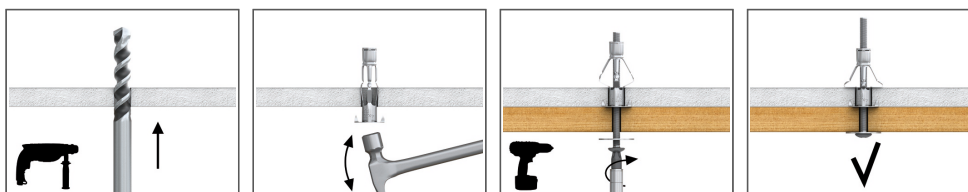
- Shelves and bathroom accessories on standard plasterboard
- Radiators and kitchen cabinets on double thickness and tiled plasterboard
- Pictures
- Lamps
- Towel rails
- Curtain rails
- Mirrors

#### Base materials

##### Suitable for use in

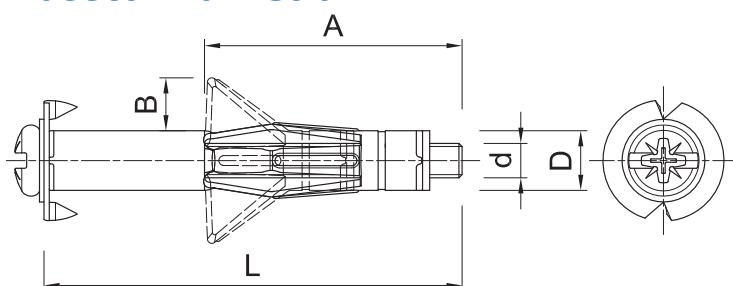
- Plasterboard
- Gypsum Fibreboards
- Chipboard
- Oriented Strand Board

### Installation guide



1. Drill a hole of required diameter.
2. Insert the fixing into the hole. Tap in lightly, ensuring that the anti-rotation lugs penetrate the face of the base material
3. With the hole drilled and the fixing inserted, the setting tool or screw driver is used to pull the screw head, thus expanding the fixing body

## Product information



Product Code	Steel sleeve		Fixture	Bolt		Steel sleeve	Substrate thickness, min.	Fixture
	Minimum clearance		Hole diameter	Diameter	Length	Diameter		Max. thickness
	A	B	$d_f$	d	L	D		$t_{fx}$
	[mm]							
SM-06052	38	13	11	6	52	11	9.5	23
R-SM-04038	25	8	7	4	40	7	12	17
R-SM-04020	16	5	7	4	20	7	4	10
R-SM-04032	25	7	7	4	32	7	9.5	15
R-SM-04046	26	7	7	4	54	7	19	17
R-SM-04059	16	8	7	4	66	7	32	16
R-SM-05037	27	9	9	5	40	9	9.5	17
R-SM-05052	40	13	9	5	52	9	9.5	23
R-SM-05065	38	13	11	6	65	11	24	23
R-SM-06037	27	8	11	6	37	11	9.5	18
R-SM-06052	38	13	11	6	52	11	9.5	23
R-SM-06065	38	13	11	6	65	11	24	23
R-SM-06080	40	12	11	6	80	11	36	25
R-SM-08080	42	12	13	8	95	13	36	25

## Installation data

Size			M4	M5	M6
Hole diameter in substrate	$d_o$	[mm]	8	10	12
Min. spacing	$s_{min}$	[mm]	25	25	25
Min. edge distance	$c_{min}$	[mm]	25	25	25
Min. substrate thickness	$h_{min}$	[mm]	-	9.5	9.5

## Product commercial data

Product Code	Substrate thickness, min. [mm]	Quantity [pcs]			Weight [kg]			Bar Codes
		Box	Outer	Pallet	Box	Outer	Pallet	
R-SM-04032K		100	3200	76800	0.79	25.3	636.0	5906675144047
R-SM-04032S		100	1200	28800	1.02	12.3	324.9	5906675144054
R-SM-04038	12	100	1600	38400	0.84	13.4	351.4	5906675172361
R-SM-04020	4	100	3200	76800	0.55	17.7	453.9	5906675172323
R-SM-04032	9.5	100	3200	76800	0.73	23.2	587.6	5906675172347
R-SM-04046	19	100	1600	38400	0.92	14.7	383.3	5906675004655
R-SM-04059	32	100	1600	38400	1.16	18.5	473.9	5906675004662
R-SM-05037	9.5	100	1600	38400	1.32	21.1	535.7	5906675172385
R-SM-05052	9.5	100	1600	38400	1.69	27.0	677.0	5906675172408
SM-06052	9.5	100	1200	28800	2.2	26.4	663.3	5906675192222
R-SM-05065	24	100	1200	28800	2.0	24.0	606.0	5906675172422
R-SM-06037	9.5	100	1200	28800	1.74	20.9	531.1	5906675172446

### Product commercial data

Product Code	Substrate thickness, min. [mm]	Quantity [pcs]			Weight [kg]			Bar Codes
		Box	Outer	Pallet	Box	Outer	Pallet	
R-SM-06052	9.5	100	1200	28800	2.2	26.5	665.9	5906675172460
R-SM-06065	24	50	600	14400	1.37	16.5	425.7	5906675172484
R-SM-06080	36	50	600	14400	1.52	18.2	466.3	5906675004679
R-SM-08080	36	50	600	14400	2.8	33.2	826.3	5906675158181