

## R-STUDC Composite rebar

Composite rebar with a flat tip for use with bonded anchors.



### Product information

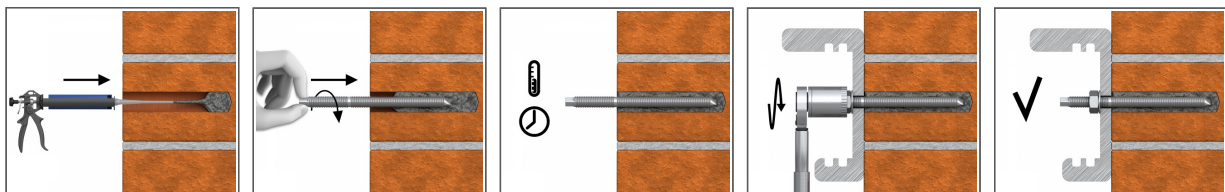
#### Features and benefits

- High-performance bonded anchors offer high load-bearing capacities
- Can be post-installed through fixture in some cases. (Consult technical advisory service)
- Flat head for quick manual installation without a setting tool

#### Applications

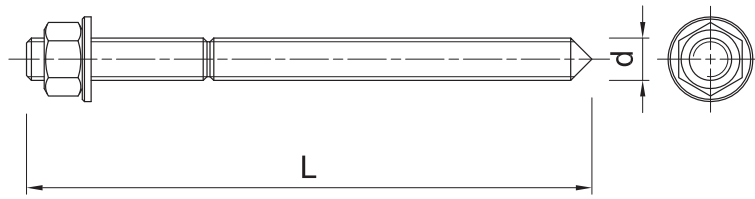
- Shipbuilding
- Offshore technology
- Swimming pool technology
- Plants in the chemical industry
- Heat exchangers and evaporators
- Flue gas desulphurization plants
- Tanks for aggressive chemical products
- Tunnel construction

### Installation guide



1. Drill hole to the required diameter and depth for stud size being used.
2. Clean the hole thoroughly with hand pump and hole brush
3. If required, insert the mesh sleeve into position
4. Fill hole with the required resin to the recommended fill level. (Follow the relevant instructions for the resin product)
5. Insert the threaded stud slowly and with a slight twisting motion, until the required embedment depth is reached
6. Leave undisturbed until curing time of resin has elapsed
7. Attach fixture and tighten the nut to the required installation torque

### Product information



Size	Product Code	Anchor		Fixture		
		Diameter	Length	Max. thickness $t_{fix}$ for:		Hole diameter
		d	L	$h_{nom, 6d}$	$h_{nom, 12d}$	$d_f$
		[mm]	[mm]	[mm]	[mm]	[mm]
M12	R-STUDC-12500	12	500	413	341	14
	R-STUDC-18500	12	500	-	-	14
M14	R-STUDC-14500	14	500	413	341	14
M16	R-STUDC-16500	16	50	-	-	16

### Product commercial data

Size	Product Code	Anchor		Quantity [pcs]			Weight [kg]			Bar Codes
		Diameter [mm]	Length [mm]	Box	Outer	Pallet	Box	Outer	Pallet	
M12	R-STUDC-12500	12	500	50	50		5.8	5.8		5906675489896
	R-STUDC-18500	12	500	50	50		11.8	11.8		5906675489919
M14	R-STUDC-14500	14	500	50	50		7.1	7.1		5906675490595
M16	R-STUDC-16500	16	50	50	50		9.3	9.3		5906675489902