

Rawlplug® Rawl® RAWLDRIVE NYLON SELF-DRILLING HOLLOW WALL ANCHORS

Self-drilling light-duty nylon fixing for use in plasterboard sheets and gypsum fibreboards.



Product information

Features and benefits

- Flange prevents accidental push through in plasterboard.
- Can be used in single and double thickness plasterboard.
- Short length ideally suited for dry lined walls.
- Very durable nylon material with fibre glass and special drilling point guarantees fast installation
- Installation with a standard screwdriver means that no special tools are necessary.
- Recommended screw diameter: 3.5 - 4.2 mm
- Must only be used with screw provided.

Applications

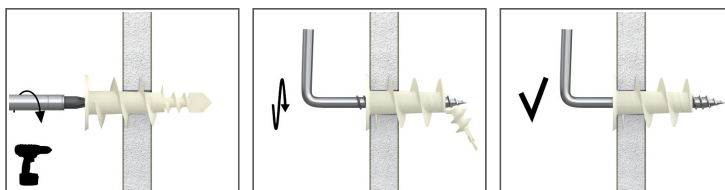
- Ideal for installation of sockets, light switches and other electrical fittings
- Shelves and bathroom accessories on standard plasterboard.
- Installation of ceiling fixtures, such as light fittings
- Fixing light shelving, brackets and hooks
- Pictures
- Wood battens

Base materials

Suitable for use in

- Plasterboard
- Gypsum Fibreboards

Installation guide



1. Using a PZ2 screwdriver, push fixing point firmly into the board until thread engages.
2. Maintaining a firm pressure, screw in fixing until flush with the base material.
3. Place fixture in position, insert screw and tighten until secure.

Product commercial data

Product Code	Quantity [pcs]			Weight [kg]			Bar Codes
	Box	Outer	Pallet	Box	Outer	Pallet	