

FIX EXPANSION PLUG WITH COCHLEAR HOOK

Easy-to-install plug with cochlear hook giving exceptional performance in solid base materials.



Product information

Features and benefits

- Anti-rotation fins prevent spinning during tightening of the screw.
- Engineered grip feature for extra holding power.
- Two-way expansion mechanism provides a strong anchorage in solid base materials.
- Cochlear hook for many application scenarios

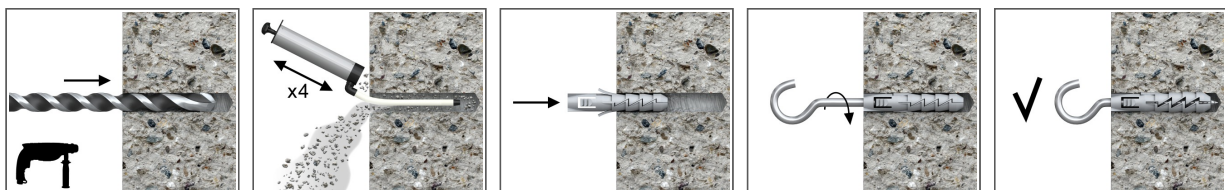
Applications

- Swing
- Lighting

Base materials

- Approved for use in:
- Concrete

Installation guide

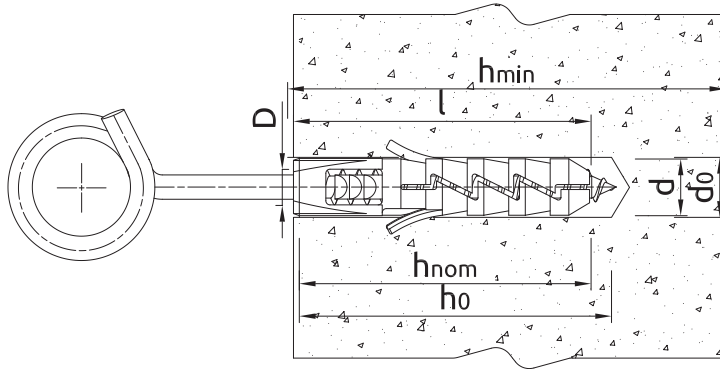


1. Drill a hole of required diameter.
2. Insert FIX plug into hole and tap home.
3. Insert screw of required diameter into plug through fixture and tighten.

Product information

Size	Product Code
------	--------------

Installation data



Installation data

Size			Ø12
Hole diameter in substrate	d_o	[mm]	12
Min. hole depth in substrate	h_o	[mm]	70
Min. installation depth	h_{nom}	[mm]	60
Min. substrate thickness	h_{min}	[mm]	90
Min. spacing	s_{min}	[mm]	120
Min. edge distance	c_{min}	[mm]	120
Fixing diameter	d	[mm]	12

Basic performance data

Performance data for single fixing without influence of edge distance and spacing

Substrate	Concrete C20/25 - C50/60	Solid clay brick min 20MPa (eg Mz20/2.0)	Sand-lime solid brick	Aerated concrete 600 Mark V
CHARACTERISTIC LOAD				
TENSION LOAD N_{Rk}				
Ø12, Embedment depth 60mm	[kN]	1.20	1.20	1.25
SHEAR LOAD V_{Rk}				
Ø12, Embedment depth 60mm	[kN]	1.20	1.20	2.00
DESIGN LOAD				
TENSION LOAD N_{Rd}				
Ø12, Embedment depth 60mm	[kN]	0.67	0.48	1.00
SHEAR LOAD V_{Rd}				
Ø12, Embedment depth 60mm	[kN]	0.96	0.96	1.60
RECOMMENDED LOAD				
TENSION LOAD N_{rec}				
Ø12, Embedment depth 60mm	[kN]	0.48	0.34	0.71
SHEAR LOAD V_{rec}				
Ø12, Embedment depth 60mm	[kN]	0.69	0.69	1.14