

O Metal frame anchor

Metal frame anchor for window and door installation



Product information

Features and benefits

- Metal sleeve design guards against distortion of the frame
- Anti-rotation lugs prevent rotation during tightening
- All-steel construction for strength and durability
- Quick and easy installation.
- The cover caps (available separately) can be used to discreetly cover the head of anchor.

Applications

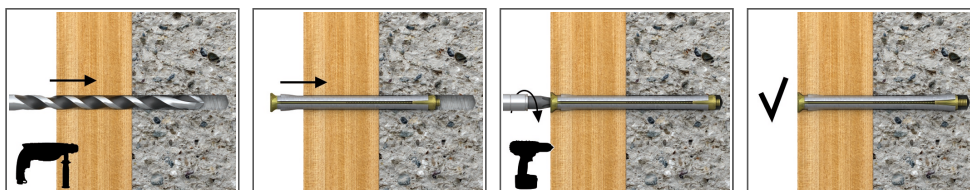
- Door and window frames

Base materials

Approved for use in:

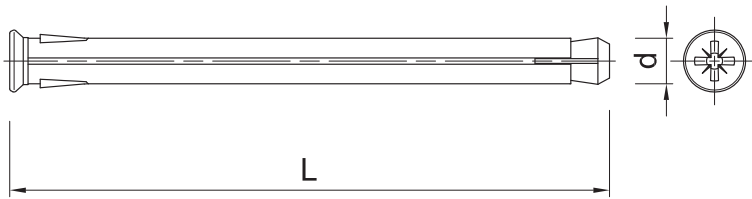
- Concrete
- Reinforced concrete

Installation guide



1. Drill a hole of required diameter and depth
2. Lightly tap the anchor through the fixture into hole with hammer, until fixing depth is reached
3. Tighten screw until secure

Product information



Size	Product Code	Anchor		Fixture		
		Diameter	Length	Max. thickness		Hole diameter
		d	L	t _{fix} Concrete	t _{fix} Solid brick	d _f
[mm]						
M10	O-10072	10	72	32	12	11
	O-10092	10	92	52	32	11
	O-10112	10	112	72	52	11
	O-10132	10	132	92	72	11
	O-10152	10	152	112	92	11
	O-10182	10	182	142	122	11
	O-10202	10	202	162	142	11
	R-O-10072	10	72	32	12	11
	R-O-10092	10	92	52	32	11
	R-O-10112	10	112	72	52	11
	R-O-10132	10	132	92	72	11
	R-O-10152	10	152	112	92	11
	R-O-10182	10	182	142	122	11
	R-O-10202	10	202	162	142	11

Installation data

Substrate			Concrete	Solid brick
Hole diameter in substrate	d ₀	[mm]	10	10
Min. hole depth in substrate	h ₀	[mm]	50	70
Min. installation depth	h _{nom}	[mm]	40	60
Min. substrate thickness	h _{min}	[mm]	70	90
Min. spacing	s _{min}	[mm]	40	40
Min. edge distance	c _{min}	[mm]	60	60
Diameter	d	[mm]	10	10

Basic performance data

Performance data for single fixing without influence of edge distance and spacing

Substrate		Concrete C20/25	Solid brick 7.5MPa
MEAN ULTIMATE LOAD F_{R0,m}			
M10, Effective embedment depth 40 mm	[kN]	9.19	-
M10, Effective embedment depth 60 mm	[kN]	-	4.35
CHARACTERISTIC LOAD F_{Rk}			
M10, Effective embedment depth 40 mm	[kN]	5.50	-
M10, Effective embedment depth 60 mm	[kN]	-	2.50
DESIGN LOAD F_{Rd}			
M10, Effective embedment depth 40 mm	[kN]	2.20	-
M10, Effective embedment depth 60 mm	[kN]	-	0.90
RECOMMENDED LOAD F_{rec}			
M10, Effective embedment depth 40 mm	[kN]	1.57	-
M10, Effective embedment depth 60 mm	[kN]	-	0.64

Product commercial data

Product Code	Anchor		Quantity [pcs]			Weight [kg]			Bar Codes
	Diameter [mm]	Length [mm]	Box	Outer	Pallet	Box	Outer	Pallet	
O-10072	10	72	100	600	27000	2.8	16.9	791.4	5906675091129
O-10092	10	92	100	600	19200	3.5	21.0	701.5	5906675091228
O-10112	10	112	100	400	24000	4.0	16.1	994.8	5906675091327
O-10132	10	132	100	400	7300	4.7	18.7	370.8	5906675091426
O-10152	10	152	100	400	16000	5.3	21.2	877.7	5906675091525
O-10182	10	182	100	300	10800	6.2	18.5	696.8	5906675091624
O-10202	10	202	100	300	11500	6.8	20.4	811.3	5906675091723
R-O-10072	10	72	100	1200	28800	1.59	19.1	487.9	5010445211003
R-O-10092	10	92	100	100	36400	2.0	2.0	739.8	5010445211010
R-O-10112	10	112	100	100	36400	2.3	2.3	859.9	5010445211027
R-O-10132	10	132	100	100	16800	2.6	2.6	471.8	5010445211041
R-O-10152	10	152	100	100	22400	6.0	6.0	1367.3	5010445211065
R-O-10182	10	182	100	100	15600	7.0	7.0	1117.3	5010445211089
R-O-10202	10	202	100	100	36400	7.7	7.7	2829.2	5906675172064