

R-TFIX-CAP63-EPS Polystyrene cap

Post-installed polystyrene cap reduces heat transmission and results in a homogeneous insulation surface



Approvals and Reports

- ETA 17/0161
- UKTA-22/6348



Product information

Features and benefits

- Post-installed cap reduces heat transmission at fixing points
- Results in homogeneous and smooth insulation surface
- Cost-saving solution, as countersunk installation allows selection of shorter fixings.

Applications

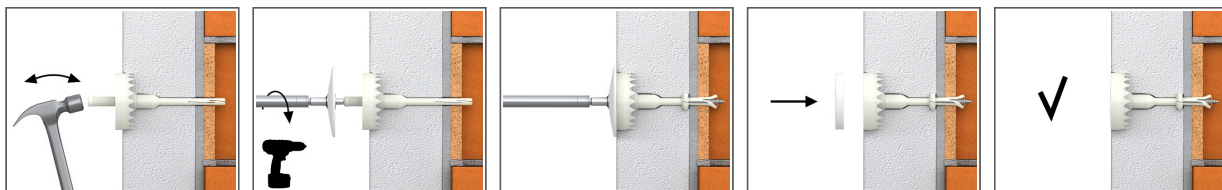
- Façade construction (ETICS)
- Polystyrene boards
- Polyurethane boards

Base materials

Approved for use in:

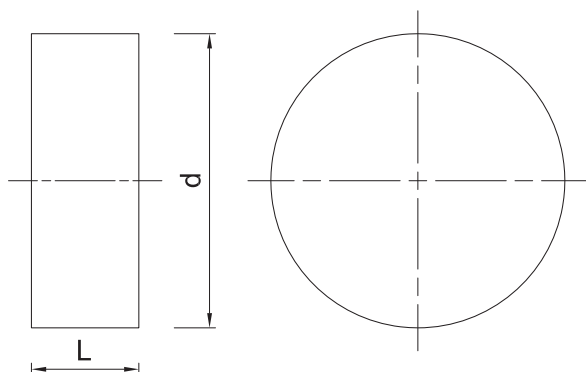
- Polystyrene (EPS) Boards

Installation guide



1. Drill a hole of required diameter and depth
2. Drilling depth of min 40mm in A,B,C,D materials and 80mm in Aerated Concrete Block
3. Lightly tap the plastic sleeve through the insulation material into hole with a hammer, until fixing depth is reached
4. Embedment depth of min 25mm in A,B,C,D materials and 65mm in Aerated Concrete Block
5. Tighten screw (using special TFIX-8ST-TOOL setting tool) until fixing is secure and flush with insulation material
6. Insert cap into countersunk hole in insulation

Product information



Product Code	Material	Diameter	High
		d	L
		[mm]	
R-TFIX-CAP63-EPS-W	white polystyrene	63	10
R-TFIX-CAP63-EPS-G	gray polystyrene	63	10

Product commercial data

Product Code	Diameter [mm]	High [mm]	Quantity [pcs]			Weight [kg]			Bar Codes
			Box	Outer	Pallet	Box	Outer	Pallet	
R-TFIX-CAP63-EPS-W ¹⁾	63	10	100	100	12000	0.30	0.30	66.5	5906675390314
R-TFIX-CAP63-EPS-G ¹⁾	63	10	100	100	12000	0.29	0.29	64.9	5906675390321

1) ETA 17/0161