

R-STUDS Metric Threaded Rods - Steel Class 10.9

Threaded rod 10.9 grade steel for use with bonded anchors.



Product information

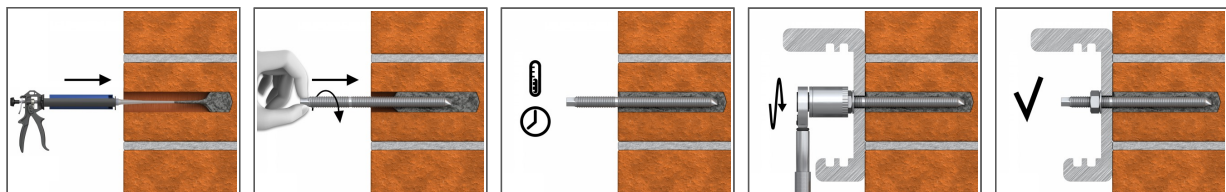
Features and benefits

- Threaded rod made of carbon steel class 10.9 is suitable for outdoor use and in damp conditions
- Class 10.9 provides much more greater tensile and yield strength than the ordinary class 8.8
- Threaded rods provide high strength and good wear resistance
- Can be post-installed through fixture in some cases. (Consult technical advisory service)
- Hexagonal head for convenient use with torque wrench

Applications

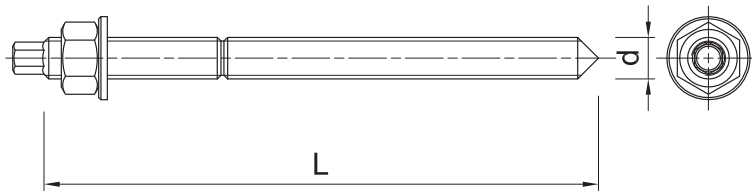
- Oil and gas industry
- Pharmaceutical processing industry
- Fastening with bonded anchors
- Barriers
- Curtain walling
- Heavy machinery
- Safety barriers
- Public seating
- Heat exchangers

Installation guide



1. Drill hole to the required diameter and depth for stud size being used.
2. Clean the hole thoroughly with hand pump and hole brush
3. If required, insert the mesh sleeve into position
4. Fill hole with the required resin to the recommended fill level. (Follow the relevant instructions for the resin product)
5. Insert the threaded stud slowly and with a slight twisting motion, until the required embedment depth is reached
6. Leave undisturbed until curing time of resin has elapsed
7. Attach fixture and tighten the nut to the required installation torque

Product information



Size	Product Code	Anchor		Fixture		
		Diameter	Length	Max. thickness t_{fix} for:		Hole diameter
		d	L	$h_{nom, 6d}$	$h_{nom, 12d}$	d_f
		[mm]	[mm]	[mm]	[mm]	[mm]
M22	R-STUDS-22280-109	22	280	123	-	24
	R-STUDS-22300-109	22	300	143	11	24
	R-STUDS-22350-109	22	350	193	61	24

Product commercial data

Size	Product Code	Anchor		Quantity [pcs]			Weight [kg]			Bar Codes
		Diameter [mm]	Length [mm]	Box	Outer	Pallet	Box	Outer	Pallet	
M22	R-STUDS-22280-109	22	280	20	20		13.6	13.6		5906675430812
	R-STUDS-22300-109	22	300	2	2	200	1.40	1.40	170.0	5906675381466
	R-STUDS-22350-109	22	350	10	10	1000	7.3	7.3	755.0	5906675420431