

## R-STUDS Metric Threaded Rods - Steel Class 10.9, Flat Head

Threaded rod 10.9 grade steel for use with bonded anchors.



### Product information

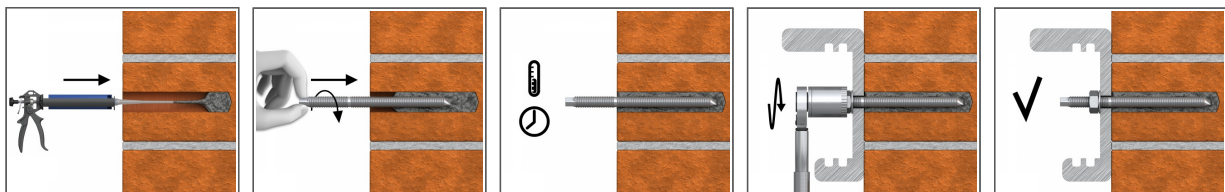
#### Features and benefits

- Threaded rod made of carbon steel class 10.9 is suitable for outdoor use and in damp conditions
- Class 10.9 provides much more greater tensile and yield strength than the ordinary class 8.8
- Threaded rods provide high strength and good wear resistance
- Can be post-installed through fixture in some cases. (Consult technical advisory service)
- Flat head for quick manual installation without a setting tool

#### Applications

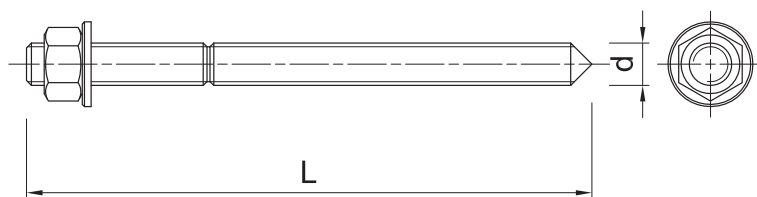
- Oil and gas industry
- Pharmaceutical processing industry
- Fastening with bonded anchors
- Barriers
- Curtain walling
- Heavy machinery
- Safety barriers
- Public seating
- Heat exchangers

### Installation guide



1. Drill hole to the required diameter and depth for stud size being used.
2. Clean the hole thoroughly with hand pump and hole brush
3. If required, insert the mesh sleeve into position
4. Fill hole with the required resin to the recommended fill level. (Follow the relevant instructions for the resin product)
5. Insert the threaded stud slowly and with a slight twisting motion, until the required embedment depth is reached
6. Leave undisturbed until curing time of resin has elapsed
7. Attach fixture and tighten the nut to the required installation torque

**Product information**



Size	Product Code	Anchor		Fixture		
		Diameter	Length	Max. thickness $t_{fix}$ for:		Hole diameter
		d	L	$h_{nom, 6d}$	$h_{nom, 12d}$	$d_f$
		[mm]	[mm]	[mm]	[mm]	[mm]
M20	R-STUDS-20200109FL	20	200	57	-	22

**Product commercial data**

Size	Product Code	Anchor		Quantity [pcs]			Weight [kg]			Bar Codes
		Diameter [mm]	Length [mm]	Box	Outer	Pallet	Box	Outer	Pallet	
M20	R-STUDS-20200109 FL	20	200	10	10		4.5	4.5		5906675474373