

R-WB Self-drilling screws for steel

Double-threaded screw for trapezoidal steel sheet – max thickness of 2 x 1.25mm



Approvals and Reports

- ETA-09/0346
- UKTA-22/6338



Product information

Features and benefits

- Hardened thread surface
- High quality anti-corrosion coating guarantees resistance of 15 Kesternich cycles.
- The shape and type of thread is designed specifically for connecting to metal sheets
- The drill point is designed to provide a fast and hassle-free installation. Sharp point of the drill prevents movement of the surface of the fixture.
- Reduced drilling point ensures optimal tightness and correct hole diameter in thin metal sheets.
- Two types of threads: one designed for mounting into construction, second under head thread, prevents external panel dents and helps to seal the connection

Applications

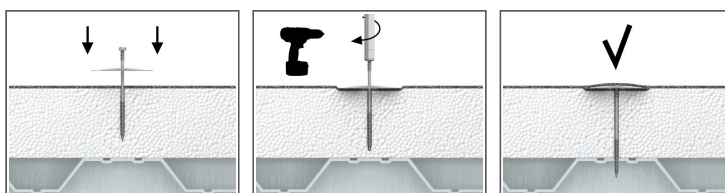
- Installing insulation layers on flat roofs in conjunction with steel washer, which remains stable thanks to the double thread.

Base materials

Approved for use in:

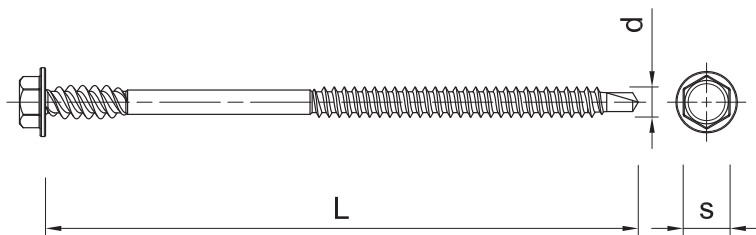
- Metal Sheet & Profiles
- Structural Steel

Installation guide



1. Position POW washer on insulation and insert WB screw
2. Using drilling machine, drive the screw into substrate until fixing depth is reached

Product information



Product Code	Screw		
	Diameter	Length	Head size
	d	L	S
	[mm]	[mm]	[mm]
R-WB-48080	4.8	80	8
R-WB-48100	4.8	100	8
R-WB-48120	4.8	120	8
R-WB-48140	4.8	140	8
R-WB-48160	4.8	160	8
R-WB-48170	4.8	170	8
R-WB-48180	4.8	180	8
R-WB-48200	4.8	200	8
R-WB-48220	4.8	220	8

Installation data

Substrate			Steel
Hole diameter in substrate	d_0	[mm]	-
Min. hole depth in substrate	h_0	[mm]	-
Min. installation depth	h_{nom}	[mm]	-
Min. substrate thickness	h_{min}	[mm]	0.75
Min. spacing	s_{min}	[mm]	120
Min. edge distance	c_{min}	[mm]	30
Screw diameter	d	[mm]	4.8

Product commercial data

Size	Product Code	Screw	Quantity [pcs]			Weight [kg]			Bar Codes
		Length [mm]	Box	Outer	Pallet	Box	Outer	Pallet	
Ø4.8	R-WB-48080 ¹⁾	80	100	1200	28800	0.94	11.2	299.3	5906675102405
	R-WB-48100 ¹⁾	100	100	1200	28800	1.11	13.3	348.5	5906675102436
	R-WB-48120 ¹⁾	120	100	1200	28800	1.30	15.5	403.0	5906675102443
	R-WB-48140 ¹⁾	140	100	1200	28800	1.47	17.6	452.5	5906675102467
	R-WB-48160 ¹⁾	160	100	1200	28800	1.66	19.9	508.7	5906675102474
	R-WB-48170 ¹⁾	170	100	1200	28800	1.73	20.8	528.2	5906675102498
	R-WB-48180 ¹⁾	180	100	100	16800	1.89	1.89	347.4	5906675102504
	R-WB-48200 ¹⁾	200	100	100	16800	2.1	2.1	377.3	5906675102511
	R-WB-48220 ¹⁾	220	100	100	16800	2.3	2.3	407.5	5906675102535

1) ETA-09/0346