

# R-STUDS Metric Threaded Rods - Steel Class 5.8

Threaded rod 5.8 grade steel for use with bonded anchors.



## Product information

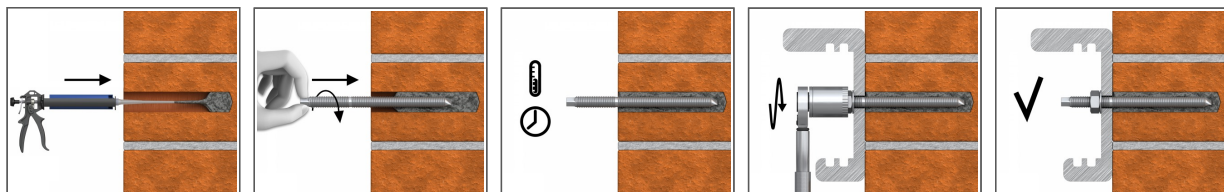
### Features and benefits

- High-performance bonded anchors offer high load-bearing capacities
- Suitable for use with special mesh sleeves in hollow substrates.
- Can be post-installed through fixture in some cases. (Consult technical advisory service)
- Hexagonal head for convenient use with torque wrench
- Possibility of removal when used with internally threaded socket

### Applications

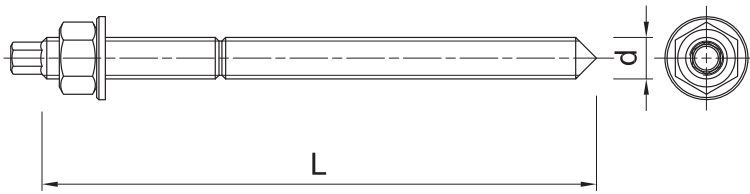
- Balustrading & handrails
- Supports
- Barriers
- Racking systems
- Consoles
- Railings
- Window elements
- Scaffolding
- Heavy machinery
- Facades
- Copy-eco systems
- Cable trays
- Curtain walling
- Formwork support systems
- Lamps
- Safety barriers
- Road Signs

## Installation guide



1. Drill hole to the required diameter and depth for stud size being used.
2. Clean the hole thoroughly with hand pump and hole brush
3. If required, insert the mesh sleeve into position
4. Fill hole with the required resin to the recommended fill level. (Follow the relevant instructions for the resin product)
5. Insert the threaded stud slowly and with a slight twisting motion, until the required embedment depth is reached
6. Leave undisturbed until curing time of resin has elapsed
7. Attach fixture and tighten the nut to the required installation torque

## Product information



Size	Product Code	Anchor		Fixture		
		Diameter	Length	Max. thickness $t_{fix}$ for:		Hole diameter
		d	L	$h_{nom, 6d}$	$h_{nom, 12d}$	$d_f$
		[mm]	[mm]	[mm]	[mm]	[mm]
M8	R-STUDS-08110	8	110	52	4	9
	R-STUDS-08160	8	160	102	54	9
M10	R-STUDS-10130	10	130	58	-	12
	R-STUDS-10170	10	170	98	38	12
	R-STUDS-10190	10	190	118	58	12
M12	R-STUDS-12160	12	160	73	1	14
	R-STUDS-12190	12	190	103	31	14
	R-STUDS-12220	12	220	133	61	14
	R-STUDS-12260	12	260	173	101	14
	R-STUDS-12300	12	300	213	141	14
M16	R-STUDS-16190	16	190	75	-	18
	R-STUDS-16220	16	220	105	9	18
	R-STUDS-16260	16	260	145	49	18
	R-STUDS-16300	16	300	185	89	18
	R-STUDS-16380	16	380	265	169	18
M20	R-STUDS-20260	20	260	117	-	22
	R-STUDS-20300	20	300	157	37	22
	R-STUDS-20350	20	350	207	87	22
M24	R-STUDS-24300	24	300	128	-	26
M30	R-STUDS-30380	30	380	166	-	32

## Product commercial data

Size	Product Code	Anchor		Quantity [pcs]			Weight [kg]			Bar Codes
		Diameter [mm]	Length [mm]	Box	Outer	Pallet	Box	Outer	Pallet	
M8	R-STUDS-08110	8	110	10	500	4000	0.43	21.6	202.8	5906675127477
	R-STUDS-08160	8	160	10	150	4200	0.61	9.1	284.1	5906675234649
M10	R-STUDS-10130	10	130	10	300	9000	0.77	23.1	723.9	5906675127484
	R-STUDS-10170	10	170	10	10	4200	1.01	1.01	453.4	5906675234663
	R-STUDS-10190	10	190	10	10	9000	1.09	1.09	1014.6	5906675234670
M12	R-STUDS-12160	12	160	10	120	5040	1.45	17.4	760.8	5906675127491
	R-STUDS-12190	12	190	10	120	5760	1.57	18.8	931.4	5906675234694
	R-STUDS-12220	12	220	10	120	5760	1.77	21.3	1051.2	5906675234700
	R-STUDS-12260	12	260	10	90	4050	2.1	19.0	883.3	5906675234717
	R-STUDS-12300	12	300	10	10	4500	2.4	2.4	1110.0	5906675234731
M16	R-STUDS-16190	16	190	10	10	3600	2.8	2.8	1049.2	5906675130903
	R-STUDS-16220	16	220	10	10	2880	3.3	3.3	975.8	5906675234748
	R-STUDS-16260	16	260	10	10	1920	3.8	3.8	760.9	5906675234755
	R-STUDS-16300	16	300	5	5	270	2.2	2.2	148.3	5906675234762
	R-STUDS-16380	16	380	1	40	1320	0.57	23.0	787.9	5906675234779
M20	R-STUDS-20260	20	260	5	5	1600	2.9	2.9	964.1	5906675234786
	R-STUDS-20300	20	300	5	5	870	3.5	3.5	632.4	5906675379463
	R-STUDS-20350	20	350	2	2		1.57	1.57		5906675324883
M24	R-STUDS-24300	24	300	2	2	1000	2.0	2.0	1004.0	5906675260433

### Product commercial data

Size	Product Code	Anchor		Quantity [pcs]			Weight [kg]			Bar Codes
		Diameter [mm]	Length [mm]	Box	Outer	Pallet	Box	Outer	Pallet	
M30	R-STUDS-30380	30	380	2	2	500	3.9	3.9	1011.5	5010445001611