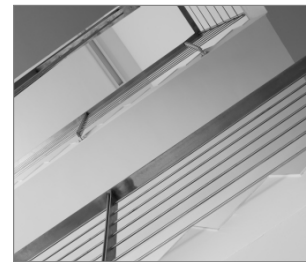


R-STUDS Metric Threaded Rods - Steel Class 8.8, Zinc Flake, Flat Head

Threaded rod 8.8 grade steel, zinc flake (ZF) with increased corrosion resistance, for use with bonded anchors



Product information

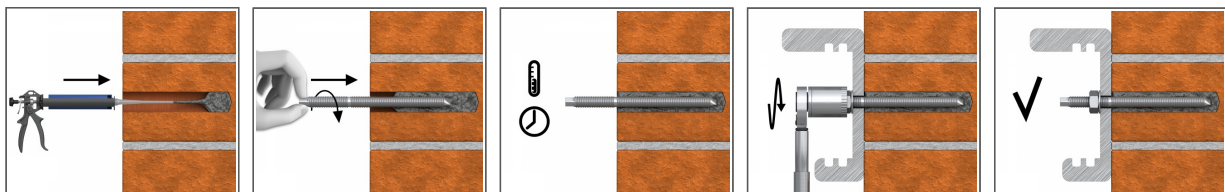
Features and benefits

- Special zinc flake corrosion-resistant coating
- Can be post-installed through fixture in some cases. (Consult technical advisory service)

Applications

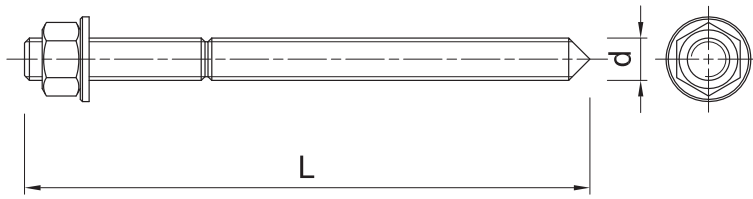
- Fastening with bonded anchors
- Balustrading & handrails
- Barriers
- Cable trays
- Consoles
- Curtain walling
- Formwork support systems
- Heavy machinery
- Lamps
- Safety barriers
- Road Signs
- Railings
- Public seating

Installation guide



1. Drill hole to the required diameter and depth for stud size being used.
2. Clean the hole thoroughly with hand pump and hole brush
3. If required, insert the mesh sleeve into position
4. Fill hole with the required resin to the recommended fill level. (Follow the relevant instructions for the resin product)
5. Insert the threaded stud slowly and with a slight twisting motion, until the required embedment depth is reached
6. Leave undisturbed until curing time of resin has elapsed
7. Attach fixture and tighten the nut to the required installation torque

Product information



Size	Product Code	Anchor		Fixture		
		Diameter	Length	Max. thickness t_{fix} for:		Hole diameter
		d	L	$h_{nom, 6d}$	$h_{nom, 12d}$	d_f
		[mm]	[mm]	[mm]	[mm]	[mm]
M8	R-STUDS-0816088ZFF	8	160	102	54	9
M10	R-STUDS-1013088ZFF	10	130	58	-	12
M12	R-STUDS-1211088ZFF	12	110	23	-	14
	R-STUDS-1216088ZFF	12	160	73	1	14
	R-STUDS-1220088ZFF	12	200	113	41	14
	R-STUDS-1222088ZFF	12	220	133	61	14
	R-STUDS-1233088ZFF	12	330	243	171	14
	R-STUDS-1235088ZFF	12	350	263	191	14
	R-STUDS-1238088ZFF	12	380	293	221	14
	R-STUDS-1240088ZFF	12	400	313	241	14

Product commercial data

Size	Product Code	Anchor		Quantity [pcs]			Weight [kg]			Bar Codes
		Diameter [mm]	Length [mm]	Box	Outer	Pallet	Box	Outer	Pallet	
M8	R-STUDS-0816088ZFF	8	160	100	100		4.3	4.3		5906675475097
M10	R-STUDS-1013088ZFF	10	130	10	10		0.77	0.77		5906675472003
M12	R-STUDS-1211088ZFF	12	110	100	100		9.3	9.3		5906675475158
	R-STUDS-1216088ZFF	12	160	100	100		13.5	13.5		5906675475103
	R-STUDS-1220088ZFF	12	200	10	10		1.66	1.66		5906675469652
	R-STUDS-1222088ZFF	12	220	10	10		1.77	1.77		5906675469669
	R-STUDS-1233088ZFF	12	330	10	10		2.2	2.2		5906675469676
	R-STUDS-1235088ZFF	12	350	10	10		2.7	2.7		5906675469683
	R-STUDS-1238088ZFF	12	380	10	10		3.0	3.0		5906675469690
	R-STUDS-1240088ZFF	12	400	10	10		3.3	3.3		5906675469706