

## R-STUDS Metric Threaded Rods - Steel Class 5.8, Hot Dip Galvanized, Flat Head

Threaded rod 5.8 grade steel, hot-dip galvanized (HDG) with increased corrosion resistance, for use with bonded anchors



### Product information

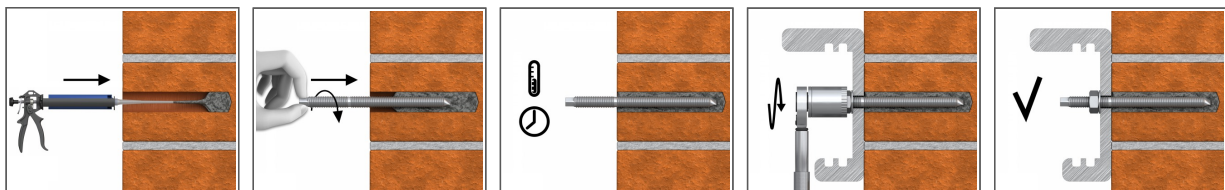
#### Features and benefits

- Threaded rod made of hot dip galvanized steel is suitable for outdoor use and in damp conditions
- High-performance bonded anchors offer high load-bearing capacities
- Suitable for use with special mesh sleeves in hollow substrates.
- Flat head for quick manual installation without a setting tool
- Can be post-installed through fixture in some cases. (Consult technical advisory service)
- Possibility of removal when used with internally threaded socket

#### Applications

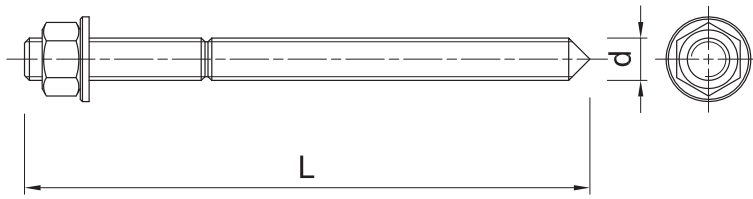
- Fastening with bonded anchors
- Supports
- Barriers
- Racking systems
- Consoles
- Railings
- Window elements
- Scaffolding
- Heavy machinery

### Installation guide



1. Drill hole to the required diameter and depth for stud size being used.
2. Clean the hole thoroughly with hand pump and hole brush
3. If required, insert the mesh sleeve into position
4. Fill hole with the required resin to the recommended fill level. (Follow the relevant instructions for the resin product)
5. Insert the threaded stud slowly and with a slight twisting motion, until the required embedment depth is reached
6. Leave undisturbed until curing time of resin has elapsed
7. Attach fixture and tighten the nut to the required installation torque

**Product information**



Size	Product Code	Anchor		Fixture		
		Diameter	Length	Max. thickness $t_{fix}$ for:		Hole diameter
		d	L	$h_{nom, 6d}$	$h_{nom, 12d}$	$d_f$
		[mm]	[mm]	[mm]	[mm]	[mm]
M12	R-STUDS-12150-HDFL	12	150	63	-	14
M16	R-STUDS-16190-HDFL	16	190	75	-	18
	R-STUDS-16240-HDFL	16	240	125	29	18
	R-STUDS-16270-HDFL	16	270	155	59	18
	R-STUDS-16290-HDFL	16	290	175	79	18
	R-STUDS-16320-HDFL	16	320	205	109	18
	R-STUDS-16370-HDFL	16	370	255	159	18
M20	R-STUDS-20260-HDFL	20	260	117	-	22
	R-STUDS-20300-HDFL	20	300	157	37	22

**Product commercial data**

Size	Product Code	Anchor		Quantity [pcs]			Weight [kg]			Bar Codes
		Diameter [mm]	Length [mm]	Box	Outer	Pallet	Box	Outer	Pallet	
M12	R-STUDS-12150-HD FL	12	150	10	120		1.36	16.3		5906675478364
M16	R-STUDS-16190-HD FL	16	190	10	10		2.9	2.9		
	R-STUDS-16240-HD FL	16	240	10	10		3.6	3.6		5906675478371
	R-STUDS-16270-HD FL	16	270	10	10		4.1	4.1		5906675478401
	R-STUDS-16290-HD FL	16	290	10	10		4.4	4.4		5906675478388
	R-STUDS-16320-HD FL	16	320	10	10		4.8	4.8		5906675478395
	R-STUDS-16370-HD FL	16	370	10	10		5.6	5.6		5906675478418
M20	R-STUDS-20260-HD FL	20	260	20	20	1760	12.0	12.0	1082.5	5906675489933
	R-STUDS-20300-HD FL	20	300	20	20	1280	13.7	13.7	909.4	5906675484396