

R-TFIX-TOOL-CSMBIT Replaceable TORX-BIT T40 for R-TFIX-TOOL-CSM - 2 pcs.

TX40 Setting tool with integrated disc and perforator for countersunk installation of screw-in fixing R-TFIX-8SX



Product information

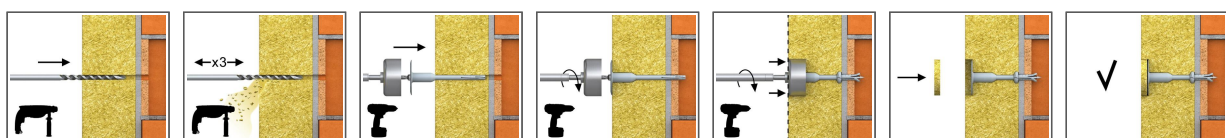
Features and benefits

- User-friendly - enables fast and easy installation
- Ideal design of TX40 bit perfect suited to the screw-in R-TFIX-8SX allows easy and stable installation
- Integrated disc and perforator facilitates optimum R-TFIX-8SX countersunk installation, for the perfect flush with the surface of the insulation it is necessary to use additional insulation cap R-TFIX-CAP63.
- Countersunk installation (with post-installed insulation cap) reduces heat transmission and results in a homogenous insulation surface.
- Torx-40 bit type

Applications

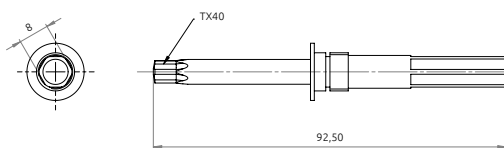
- External Thermal Insulation Composite Systems (ETICS)
- Polystyrene (EPS) boards
- Mineral wool (MW) boards

Installation guide



1. Drill a hole of required diameter and depth.
2. Drilling depth of min 35mm in A,B,C,D materials and 75mm in Aerated Concrete Block.
3. Clean drilled hole 3 times.
4. Insert R-TFIX-TOOL-CSM into recess in head moulding of R-TFIX-8SX screw.
5. Insert the fixing into the drilled hole.
6. Bottom side of the plate must be flush with the ETICS.
7. Embedment depth of min 25mm in A,B,C,D materials and 65mm in Aerated Concrete Block.
8. Apply steady axial pressure, ensuring the disc of the setting tool is kept perpendicular to the fixing axis.
9. Steadily drive in the screw with high revs until fixing is secure (when disc touches insulation surface).

Product information



Product Code	Bite type	Diameter		Length	
		d		L	
		[mm]			
R-TFIX-TOOL-CSMBIT	T40	63		38	

Product commercial data

Product Code	Diameter [mm]	Length [mm]	Quantity [pcs]			Weight [kg]			Bar Codes
			Box	Outer	Pallet	Box	Outer	Pallet	
R-TFIX-TOOL-CSMBIT	63	38	1	10	780	0.06	0.60	76.8	5906675477350