

## R-TFIX-CAP15-EPS Polystyrene cap

Post-installed polystyrene cap reduces heat transmission.



### Approvals and Reports

- ETA 17/0161
- UKTA-22/6348



### Product information

#### Features and benefits

- Post-installed cap reduces heat transmission at fixing points

#### Applications

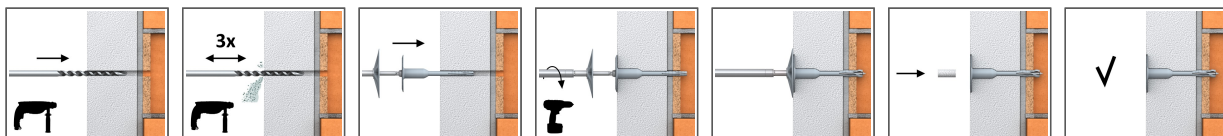
- Façade construction (ETICS)
- Polystyrene boards
- Mineral wool (MW) boards
- Polyurethane boards

#### Base materials

##### Approved for use in:

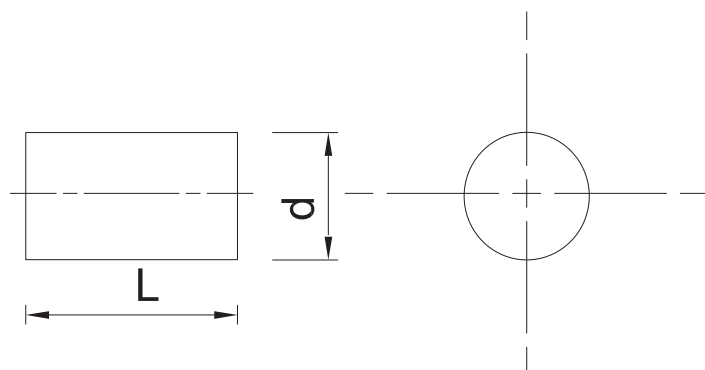
- Polystyrene (EPS) Boards
- Mineral Wool Boards

### Installation guide



1. Drill a hole of required diameter and depth.
2. Drilling depth of min 35mm in A,B,C,D materials and 75mm in Aerated Concrete Block.
3. Clean drilled hole 3 times.
4. Insert R-TFIX-TOOL-GREY into recess in head moulding of R-TFIX-8SX screw.
5. Insert the fixing into the drilled hole.
6. Embedment depth of min 25mm in A,B,C,D materials and 65mm in Aerated Concrete Block.
7. Apply steady axial pressure, ensuring the disc of the setting tool is kept perpendicular to the fixing axis.
8. Steadily drive in the screw with high revs until fixing is secure (when disc touches insulation surface).

## Product information



Product Code	Material	Diameter	High
		d	L
		[mm]	
R-TFIX-CAP15-EPS-W	white polystyrene	15	25
R-TFIX-CAP15-EPS-G	gray polystyrene	15	25

## Product commercial data

Product Code	Diameter [mm]	High [mm]	Quantity [pcs]			Weight [kg]			Bar Codes
			Box	Outer	Pallet	Box	Outer	Pallet	
R-TFIX-CAP15-EPS-W <sup>1)</sup>	15	25	100	1000	40000	0.01	0.10	34.0	5906675403151
R-TFIX-CAP15-EPS-G <sup>1)</sup>	15	25	100	1000	40000	0.01	0.10	34.0	5906675403168

1) ETA 17/0161