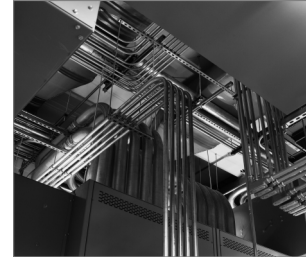


## R-DCA-ST-II Wedge Anchor Setting Tools - II Generation

Manual setting tool



### Approvals and Reports

- ETA-13/0584



### Product information

#### Features and benefits

- Unique tool for installing R-DCA and R-DCL anchors
- Manual installation of wedge anchors with rubber grip and hand protection
- The ergonomic rubber grip ensures a comfortable installation

#### Applications

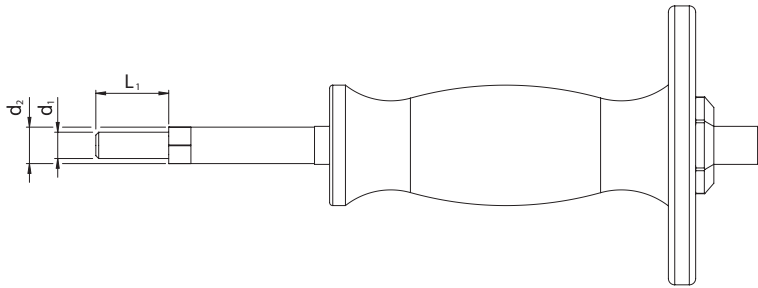
- Installation of wedge anchors

### Installation guide



1. Use the manual setting tool with hammer to drive the internal wedge into the anchor

**Product information**



Size	Product Code	Diameter		Length
		d <sub>1</sub>	d <sub>2</sub>	L <sub>1</sub>
		[mm]	[mm]	[mm]
M6	R-DCA-ST-II-06	5	7.5	14.8
M8	R-DCA-ST-II-08-25	6.6	9.5	17
	R-DCA-ST-II-08	6.6	9.5	18
M10	R-DCA-ST-II-10	8.3	11.5	23
	R-DCA-ST-II-10-25	8.3	11.5	17
	R-DCA-ST-II-10-30	8.3	11.5	18
M12	R-DCA-ST-II-12-25	10.2	14.5	17
	R-DCA-ST-II-12	10.2	14.5	28
M16	R-DCA-ST-II-16	13.5	19.5	33

**Product commercial data**

Product Code	Length [mm]	Quantity [pcs]			Weight [kg]			Bar Codes
		Box	Outer	Pallet	Box	Outer	Pallet	
R-DCA-ST-II-06 <sup>1)</sup>	14.8	1	10	560	2.8	27.8	1586.2	5906675423449
R-DCA-ST-II-08-25 <sup>1)</sup>	17	1	10	560	0.31	3.1	202.8	5906675430775
R-DCA-ST-II-08 <sup>1)</sup>	18	1	10	240	3.2	32.2	801.6	5906675423456
R-DCA-ST-II-10 <sup>1)</sup>	23	1	10	240	3.3	33.3	829.9	5906675423463
R-DCA-ST-II-10-25 <sup>1)</sup>	17	1	10	560	0.36	3.6	230.7	5906675430782
R-DCA-ST-II-10-30 <sup>1)</sup>	18	1	10	560	0.33	3.3	213.1	5906675455341
R-DCA-ST-II-12-25 <sup>1)</sup>	17	1	10	560	0.45	4.5	281.7	5906675432090
R-DCA-ST-II-12 <sup>1)</sup>	28	1	10	560	4.5	45.1	2556.7	5906675423470
R-DCA-ST-II-16 <sup>1)</sup>	33	1	10	240	0.62	6.2	177.6	5906675423487

1) ETA-13/0584