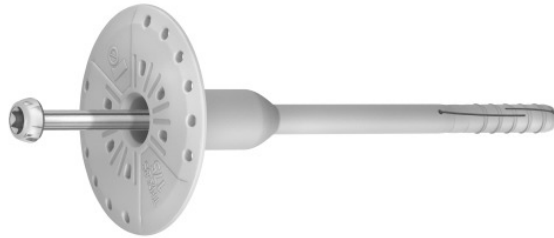


## R-TFIX-8S-...-X Universal facade fixing with plain screw

The most effective screw-in facade fixing for countersunk installation with the possibility of surface mounting



### Approvals and Reports

- ETA 17/0161
- UKTA-22/6348



### Product information

#### Features and benefits

- Quick and easy installation in all substrates (categories A,B,C,D,E)
- Unique sleeve compression zone for precision installations.
- Installation with post-installed insulation cap R-TFIX-CAP63 in three versions: R-TFIX-CAP63-EPS-W, R-TFIX-CAP63-EPS-G, R-TFIX-CAP63-EPS-MW reduces heat transmission and results in a homogenous insulation surface
- Plate stiffness (value 0.6 kN/mm) ensures smooth elevation surface and stable insulation system.
- Unique design allows for high load-bearing capacities. This reduces the quantity of fixings required per square metre of insulation
- The shortest embedment depth at the maximum strength parameters

#### Applications

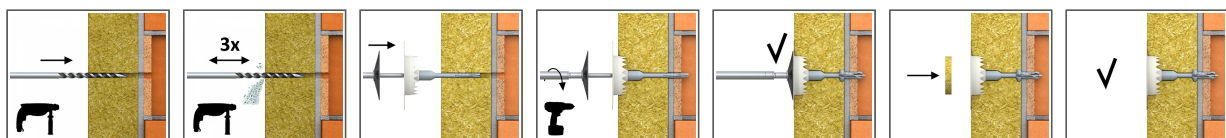
- External Thermal Insulation Composite Systems (ETICS)
- Polystyrene (EPS) boards
- Polyurethane (PU) boards
- Mineral wool (MW) boards
- Cork boards
- Lightweight wood wool building boards

#### Base materials

##### Approved for use in:

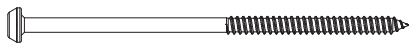
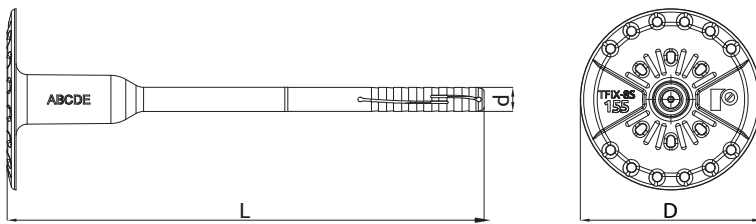
- Concrete C12/15-C50/60 (Use category A)
- External wall panel of concrete C16/20 – C50/60 (Use category A)
- Solid Brick (Use category B)
- Solid Sand-lime Brick (Use category B)
- Hollow Brick (Use category C)
- Hollow Sand-lime Brick (Use category C)
- Vertically-perforated clay block (Use category C)
- Lightweight Concrete Block (Use category C)
- Hollow Lightweight Concrete Block (Use category D)
- Reinforced components of lightweight aggregate concrete

### Installation guide



1. Drill a hole of required diameter and depth
2. Drilling depth of min 35mm in A,B,C,D materials and 75mm in Aerated Concrete Block.
3. Clean drilled hole 3 times.
4. Insert R-TFIX-TOOL-BLACK into recess in head moulding of R-TFIX-8SX screw.
5. Insert the fixing into the drilled hole.
6. When using the KWX-63 the teeth should be embedded in the insulation material after hammering.
7. Embedment depth of min 25mm in A,B,C,D materials and 65mm in Aerated Concrete Block.
8. Apply steady axial pressure, ensuring the disc of the setting tool is kept perpendicular to the fixing axis.
9. Steadily drive in the screw with high revs until fixing is secure (when disc touches insulation surface).

## Product information



Size	Product Code	Fixing			Fixture	
		Diameter	Plate diameter	Length	Recommended thickness	
		d	D	L	t <sub>fix</sub> A, B, C, D	t <sub>fix</sub> E
[mm]						
Ø08	R-TFIX-8S-115-X	8	60	115	80	40
	R-TFIX-8S-135-X	8	60	135	100	60
	R-TFIX-8S-155-X	8	60	155	120	80
	R-TFIX-8S-175-X	8	60	175	140	100
	R-TFIX-8S-195-X	8	60	195	160	120
	R-TFIX-8S-215-X	8	60	215	180	140
	R-TFIX-8S-235-X	8	60	235	200	160
	R-TFIX-8S-255-X	8	60	255	220	180
	R-TFIX-8S-275-X	8	60	275	240	200
	R-TFIX-8S-295-X	8	60	295	260	220
	R-TFIX-8S-335-X	8	60	335	300	260
	R-TFIX-8S-355-X	8	60	355	320	280
	R-TFIX-8S-375-X	8	60	375	340	300
	R-TFIX-8S-395-X	8	60	395	360	320
	R-TFIX-8S-415-X	8	60	415	380	340
	R-TFIX-8S-435-X	8	60	435	400	360
R-TFIX-8S-455-X	8	60	455	420	380	
	R-TFIX-8S-315-X	8	60	315	280	250

## Installation data

Substrate			A, B, C, D	A - external panel	E
Hole diameter in substrate	d <sub>0</sub>	[mm]	8	8	8
Min. installation depth	h <sub>nom</sub>	[mm]	25	25	45
Min. hole depth in substrate	h <sub>0</sub>	[mm]	35	35	55
Min. hole depth in substrate - countersunk mounting	h <sub>0</sub>	[mm]	45	45	65
Min. substrate thickness	h <sub>min</sub>	[mm]	100	40	100
Min. spacing	s <sub>min</sub>	[mm]	100	100	100
Min. edge distance	c <sub>min</sub>	[mm]	100	100	100
Fixing diameter	d	[mm]	8	8	8

## Basic performance data

Performance data for single anchor without influence of edge distance and spacing

Substrate		Concrete C12/15	Concrete min. C16/20	External wall panel of concrete	Solid clay brick min 20MPa (eg Mzz0/2.0)	Sand-lime brick min. 30MPa	Hollow brick 15MPa	Silicate hollow block class 15	Lightweight concrete hollow block	Prefabricated reinforced components of lightweight aggregate concrete 4MPa	Autoclaved aerated concrete AAC 4MPa
Effective embedment depth $h_{ef}$	[mm]	25	25	25	25	25	25	25	25	25	45
<b>MEAN ULTIMATE LOAD <math>N_{R,u,m}</math></b>											
R-TFIX-8SX	[kN]	1.64	2.03	2.03	1.78	1.94	1.13	-	-	1.12	1.56
R-TFIX-8S	[kN]	-	-	-	-	-	-	1.78	1.78	-	-
<b>CHARACTERISTIC LOAD <math>N_{R,k}</math></b>											
R-TFIX-8SX	[kN]	1.20	1.50	1.50	1.50	1.50	0.90	-	-	0.90	1.20
R-TFIX-8S	[kN]	-	-	-	-	-	-	1.50	1.50	-	-
<b>DESIGN LOAD <math>N_{R,d}</math></b>											
R-TFIX-8SX	[kN]	0.60	0.75	0.75	0.75	0.75	0.45	-	-	0.45	0.60
R-TFIX-8S	[kN]	-	-	-	-	-	-	0.75	0.75	-	-
<b>RECOMMENDED LOAD <math>N_{R,rec}</math></b>											
R-TFIX-8SX	[kN]	0.43	0.54	0.54	0.54	0.54	0.32	-	-	0.32	0.43
R-TFIX-8S	[kN]	-	-	-	-	-	-	0.54	0.54	-	-

Fixing type		R-TFIX-8SX
Plate resistance	[kN]	2.04
Plate stiffness	[kN/mm]	0.6
Point thermal transmittance	[W/K]	0,001 - 0,002

## Product commercial data

Size	Product Code	Fixing			Diameter [mm]	High [mm]	Length [mm]	Quantity [pcs]			Weight [kg]			Bar Codes
		Diameter [mm]	Plate diameter [mm]	Length [mm]				Box	Outer	Pallet	Box	Outer	Pallet	
Ø8	R-TFIX-8S-115-X <sup>1)</sup>	8	60	115				200	200	8000	5.3	5.3	243.0	5906675417660
	R-TFIX-8S-135-X <sup>1)</sup>	8	60	135				200	200	8000	5.9	5.9	267.6	5906675417677
	R-TFIX-8S-155-X <sup>1)</sup>	8	60	155				200	200	8000	6.8	6.8	300.2	5906675417684
	R-TFIX-8S-175-X <sup>1)</sup>	8	60	175				200	200	6400	7.4	7.4	267.0	5906675417691
	R-TFIX-8S-195-X <sup>1)</sup>	8	60	195				200	200	6400	8.0	8.0	284.2	5906675417707
	R-TFIX-8S-215-X <sup>1)</sup>	8	60	215				100	100	4000	4.5	4.5	211.1	5906675417714
	R-TFIX-8S-235-X <sup>1)</sup>	8	60	235				100	100	4000	4.9	4.9	225.2	5906675417738
	R-TFIX-8S-255-X <sup>1)</sup>	8	60	255				100	100	4000	5.3	5.3	239.8	5906675417745
	R-TFIX-8S-275-X <sup>1)</sup>	8	60	275				100	100	4000	5.5	5.5	249.4	5906675417752
	R-TFIX-8S-295-X <sup>1)</sup>	8	60	295				100	100	4000	5.9	5.9	267.5	5906675417769
	R-TFIX-8S-335-X <sup>1)</sup>	8	60	335				100	100	3200	6.5	6.5	238.1	5906675417776
	R-TFIX-8S-355-X <sup>1)</sup>	8	60	355				100	100	3200	7.1	7.1	256.5	5906675417783
	R-TFIX-8S-375-X <sup>1)</sup>	8	60	375				100	100	3200	7.3	7.3	264.2	5906675417790
	R-TFIX-8S-395-X <sup>1)</sup>	8	60	395				50	50	1600	4.2	4.2	162.7	5906675417806
	R-TFIX-8S-415-X <sup>1)</sup>	8	60	415				50	50	1600	4.3	4.3	167.3	5906675417813
	R-TFIX-8S-435-X <sup>1)</sup>	8	60	435				50	50	1600	4.4	4.4	170.7	5906675417837
R-TFIX-8S-455-X <sup>1)</sup>	8	60	455				50	50	1600	4.6	4.6	177.1	5906675417844	
R-TFIX-8S-315-X <sup>1)</sup>	8	60	315				100	100	3200	6.2	6.2	228.7	5906675498942	
R-TFIX-CAP63-EPS-G					63	10		100	100	12000	0.29	0.29	64.9	5906675390321
R-TFIX-CAP63-EPS-W					63	10		100	100	12000	0.30	0.30	66.5	5906675390314
R-TFIX-CAP63-MW					63	10		100	100	9000	0.76	0.76	98.0	5906675390338

### Product commercial data

Size	Product Code	Fixing			Diameter [mm]	High [mm]	Length [mm]	Quantity [pcs]			Weight [kg]			Bar Codes
		Diameter [mm]	Plate diameter [mm]	Length [mm]				Box	Outer	Pallet	Box	Outer	Pallet	
	R-TFIX-TOOL-BLACK				80		45	1	16	384	0.11	1.68	70.3	5906675412276
	R-TFIX-TOOL-GREY				80		35	1	16	384	0.09	1.44	64.6	5906675412269
	R-TFIX-TOOL-CS				63		38	1	12	288	0.20	2.4	87.6	5906675421636
	R-TFIX-CAP15-EPS-W				15	25		100	1000	40000	0.01	0.10	34.0	5906675403151
	R-TFIX-CAP15-EPS-G				15	25		100	1000	40000	0.01	0.10	34.0	5906675403168
	R-TFIX-TOOL-CSM				63		38	1	12	288	0.30	3.6	116.4	5906675468297

1) ETA 17/0161