

## R-QCP Chipboard Screw

Hardened screws for new generation wood composites and timber



### Product information

#### Features and benefits

- Thread geometry allowing application in all wood materials
- The optimised head geometry with underhead cutting ribs also affords an exact and splinter-free surface finish even with connections close to the edge
- The double cone head allows flush fixing of the screw

#### Applications

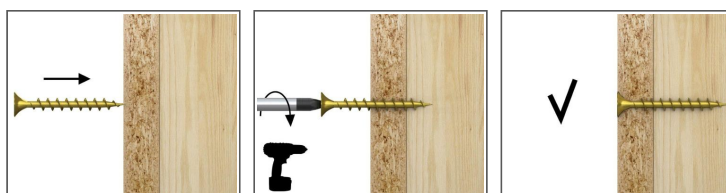
- Chipboards
- Plywood
- Wooden fences
- Wooden elements
- General wood joints
- Skirting

#### Base materials

Approved for use in:

- Chipboard
- Oriented Strand Board
- Wood

### Installation guide



1. Drive the screw straight until the head is flush
2. Screws with partial thread can clamp wooden parts avoiding spaces between them
3. Full-thread screws are recommended for fastening thin parts and in less firm wood materials (e.g. soft woods)
4. Screws with countersunk head allow flush connection

## Product information

Size	Product Code	Screw			
		Diameter	Length	Recess	Length
		d	L	-	L1
		[mm]	[mm]	-	[mm]
Ø3	R-QCP-3016	3	16	PZ1	-
	R-QCP-3020	3	20	PZ1	-
	R-QCP-3025	3	25	PZ1	-
Ø3,5	R-QCP-3516	3.5	16	PZ2	-
	R-QCP-3520	3.5	20	PZ2	-
	R-QCP-3525	3.5	25	PZ2	-
	R-QCP-3530	3.5	30	PZ2	-
	R-QCP-3540	3.5	40	PZ2	-
	R-QCP-3550	3.5	50	PZ2	-
Ø4	R-QCP-4016	4	16	PZ2	-
	R-QCP-4020	4	20	PZ2	-
	R-QCP-4025	4	25	PZ2	-
	R-QCP-4030	4	30	PZ2	-
	R-QCP-4040	4	40	PZ2	-
	R-QCP-4050	4	50	PZ2	-
	R-QCP-4060	4	60	PZ2	36
	R-QCP-4070	4	70	PZ2	42
Ø4,5	R-QCP-4530	4.5	30	PZ2	-
	R-QCP-4540	4.5	40	PZ2	-
	R-QCP-4550	4.5	50	PZ2	-
	R-QCP-4560	4.5	60	PZ2	36
Ø5	R-QCP-5025	5	25	PZ2	-
	R-QCP-5030	5	30	PZ2	-
	R-QCP-5040	5	40	PZ2	-
	R-QCP-5050	5	50	PZ2	-
	R-QCP-5060	5	60	PZ2	36
	R-QCP-5070	5	70	PZ2	42
	R-QCP-5080	5	80	PZ2	48
	R-QCP-5100	5	100	PZ2	60
Ø6	R-QCP-6030	6	30	PZ3	-
	R-QCP-6040	6	40	PZ3	-
	R-QCP-6050	6	50	PZ3	-
	R-QCP-6060	6	60	PZ3	36
	R-QCP-6070	6	70	PZ3	42
	R-QCP-6080	6	80	PZ3	48
	R-QCP-6100	6	100	PZ3	60
	R-QCP-6130	6	130	PZ3	72
	R-QCP-6150	6	150	PZ3	72

## Installation data

Size			Ø3	Ø3.5	Ø4	Ø4.5	Ø5	Ø6
Substrate			Timber	Timber	Timber	Timber	Timber	Timber
Min. installation depth	$h_{nom}$	[mm]	12	14	16	18	20	24
Min. substrate thickness	$h_{min}$	[mm]	24	28	32	36	40	48
Min. spacing	$s_{min}$	[mm]	30	30	30	30	30	30
Min. edge distance	$c_{min}$	[mm]	30	30	30	30	30	30

## Product commercial data

Product Code	Screw		Quantity [pcs]			Weight [kg]			Bar Codes
	Length [mm]		Box	Outer	Pallet	Box	Outer	Pallet	
R-QCP-3016	16		200.0	12800.0	409600.0	0.12	7.4	267.6	5010445007576
R-QCP-3020	20		200.0	12800.0	409600.0	0.15	9.3	329.0	5010445007583
R-QCP-3025	25		200.0	12800.0	409600.0	0.17	11.1	386.4	5010445007590
R-QCP-3516	16		200.0	12800.0	409600.0	0.15	9.9	345.4	5010445007606
R-QCP-3520	20		200.0	12800.0	409600.0	0.19	12.2	419.1	5010445007613
R-QCP-3525	25		200.0	12800.0	409600.0	0.23	14.6	496.9	5010445007620
R-QCP-3530	30		200.0	6400.0	204800.0	0.26	8.5	300.3	5010445007637
R-QCP-3540	40		200.0	200.0	50000.0	0.34	0.34	114.5	5010445007644
R-QCP-3550	50		200.0	12800.0	204800.0	0.29	18.4	324.9	5010445007651
R-QCP-4016	16		200.0	12800.0	409600.0	0.21	13.3	456.0	5010445007668
R-QCP-4020	20		200.0	12800.0	409600.0	0.26	16.4	554.3	5010445007675
R-QCP-4025	25		200.0	12800.0	409600.0	0.29	18.4	619.8	5010445007682
R-QCP-4030	30		200.0	200.0	50000.0	0.34	0.34	114.5	5010445007699
R-QCP-4040	40		200.0	200.0	50000.0	0.43	0.43	137.5	5010445007705
R-QCP-4050	50		200.0	6400.0	204800.0	0.52	16.6	562.5	5010445007712
R-QCP-4060	60	36	200.0	6400.0	204800.0	0.61	19.6	656.7	5010445007729
R-QCP-4070	70	42	200.0	4800.0	153600.0	0.74	17.8	598.3	5010445007736
R-QCP-4080	80	48	200.0	4800.0	153600.0	0.84	20.2	675.1	5010445007743
R-QCP-4530	30		200.0	6400.0	204800.0	0.46	14.6	496.9	5010445007750
R-QCP-4540	40		200.0	6400.0	204800.0	0.55	17.6	593.2	5010445007767
R-QCP-4550	50		200.0	6400.0	204800.0	0.70	22.4	746.8	5010445007774
R-QCP-4560	60	36	200.0	4800.0	153600.0	0.82	19.7	661.3	5010445007781
R-QCP-5025	25		200.0	6400.0	204800.0	0.48	15.5	525.6	5010445007798
R-QCP-5030	30		200.0	6400.0	204800.0	0.56	17.9	601.4	5010445007804
R-QCP-5040	40		200.0	200.0	50000.0	0.71	0.71	206.5	5010445007811
R-QCP-5050	50		200.0	4800.0	153600.0	0.84	20.1	672.0	5010445007828
R-QCP-5060	60	36	200.0	4800.0	153600.0	0.98	23.6	785.7	5010445007835
R-QCP-5070	70	42	200.0	2400.0	76800.0	1.16	13.9	473.9	5010445007842
R-QCP-5080	80	48	200.0	2400.0	76800.0	1.29	15.5	525.4	5010445007859
R-QCP-5100	100	60	200.0	2400.0	76800.0	1.58	19.0	638.3	5010445007866
R-QCP-6030	30		200.0	6400.0	204800.0	0.83	26.6	879.9	5010445007873
R-QCP-6040	40		200.0	4800.0	153600.0	1.04	25.0	828.7	5010445007880
R-QCP-6050	50		200.0	3200.0	102400.0	1.28	20.5	686.4	5010445007897
R-QCP-6060	60	36	200.0	3200.0	102400.0	1.48	23.7	787.8	5010445007903
R-QCP-6070	70	42	200.0	2400.0	76800.0	1.68	20.2	675.1	5010445007910
R-QCP-6080	80	48	200.0	2400.0	76800.0	1.93	23.1	769.6	5010445007927
R-QCP-6100	100	60	200.0	2400.0	76800.0	2.3	28.1	930.1	5010445007934
R-QCP-6130	130	72	100.0	1200.0	38400.0	1.54	18.5	622.9	5010445007941
R-QCP-6150	150	72	100.0	1200.0	38400.0	1.71	20.5	686.6	5010445007958