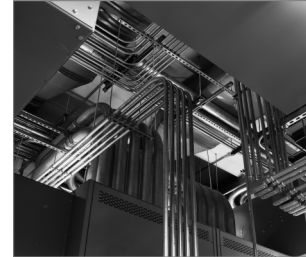


R-DCA-ST Wedge Anchor Setting Tools - I Generation

Manual setting tool



Approvals and Reports

- ETA-13/0584



Product information

Features and benefits

- Manual installation of wedge anchors

Applications

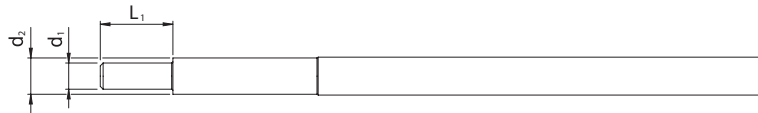
- Installation of wedge anchors

Installation guide



1. Use the manual setting tool with hammer to drive the internal wedge into the anchor

Product information



Size	Product Code	Diameter		Length
		d_1	d_2	L_1
		[mm]	[mm]	[mm]
M6	R-DCA-ST-06	5	7.5	14.8
M8	R-DCA-ST-08	6.6	9.5	18
M10	R-DCA-ST-10	8.3	11.5	23
M12	R-DCA-ST-12	10.2	14.5	28
M16	R-DCA-ST-16	13.5	19.5	33
M20	R-DCA-ST-20	16.8	24.5	47

Product commercial data

Product Code	Length [mm]	Quantity [pcs]			Weight [kg]			Bar Codes
		Box	Outer	Pallet	Box	Outer	Pallet	
R-DCA-ST-06 ¹⁾	14.8	1	100	6000	0.08	8.0	510.0	5906675204888
R-DCA-ST-08 ¹⁾	18	1	100	6000	0.07	6.9	441.0	5906675204895
R-DCA-ST-10 ¹⁾	23	1	100	4500	0.13	13.0	615.0	5906675204901
R-DCA-ST-12 ¹⁾	28	1	50	3000	0.26	12.9	803.4	5906675204918
R-DCA-ST-16 ¹⁾	33	1	30	1350	0.54	16.3	761.3	5906675204925
R-DCA-ST-20 ¹⁾	47	1	20	900	0.39	7.8	381.0	5906675204932

1) ETA-13/0584