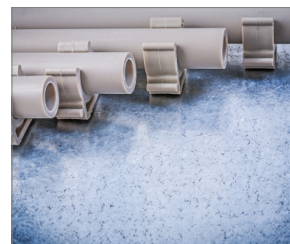


# R-RAWL-PSC40 Pneumatic steel and concrete nailer

Pneumatic steel and concrete nailer for lightweight installation applications

Certificate



## Product information

### Features and benefits

- Pin range from 15mm to 40mm provides wide range of application
- Tool free depth of drive adjustment provides precise fixing settings for any application
- Special heat treated driver blade for prolonged life of the tool
- Quick release mechanism for clearing obstructions and jams without the use of any tools. Allows also to perform simple maintenance
- More powerful than gas powered equivalent of the same specification. Up to 10% more power ensures outstanding performance in all applications and timber types
- Reduced cost of consumables - no cartridges required

### Applications

- Cable conduits and wires installation
- Applicable for fixing steel and aluminium profiles in drywall structures
- Installation of all types of M&E clips and clamps

### Corresponding products

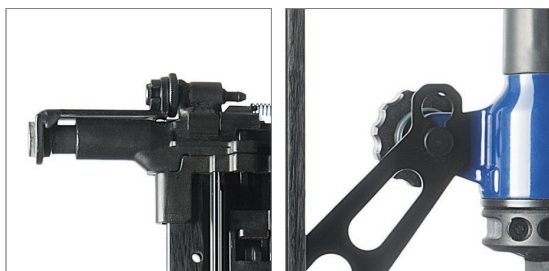
- SPG-R-KNC plastic collated pins
- SPG-R-KSC plastic collated pins
- R-RAWL-C50 Oil lubricated compressor

### Base materials

- Concrete C20/25-C50/60
- Reinforced concrete
- Concrete Slab
- Solid Concrete Block
- Unreinforced concrete
- Structural Steel

### Set includes

- R-RAWL-PSC40 Pneumatic steel and concrete nailer
- Operating and Safety manual
- Safety glasses



## Product commercial data

Index	Power source	Magazine type	Magazine capacity	Magazine angle	WEIGHT	Faster diameter range	Faster length range	Noise level	Maximum pressure	Operating pressure	Dimensions	Box weight	Outer weight	EAN
			[nail]	[degree]		[mm]	[mm]	[dB]	[bar]	[bar]	[mm]	kg	kg	
R-RAWL-PSC40	Pneumatic	Strip	40	0	3.4	2.6 - 3.0	15 - 40	87	8	5-7	437x120x320	4.41	8.81	5906675062587