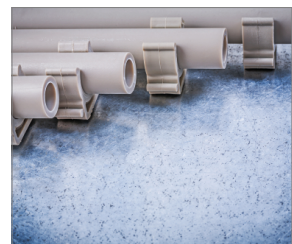


R-RAWL-SC40 Gas powered steel and concrete nailer

High performance gas powered steel and concrete nailer

Certificate



Product information

Features and benefits

- Pin range from 15mm to 40mm provides wide range of application
- Tool free depth adjustment. The operator can easily adjust the depth that the nail is driven into timber to produce a precise fixing
- Removable magnetic nose tip for attaching metal clips and ceiling hangers. User can safely and comfortably perform in all overhead applications
- Belt hook for safe storage while not in use
- LED display for monitoring battery status and preventing battery depletion
- Rear loading aluminium magazine with a capacity of 40 pins provides durability and less reload operations
- Sequential firing mode for operators safety and fixing precision

Applications

- Applicable for fixing steel and aluminium profiles in drywall structures
- Cable conduits and wires installation
- Installation of all types of M&E clips and clamps

Corresponding products

- R-KNC plastic collated concrete pins with fuel cells
- R-KSC plastic collated pins for steel with fuel cells
- R-RAWL-GP2
- R-PCC Pipe and cable clip

Base materials

- Concrete C20/25-C50/60
- Concrete Slab
- Unreinforced concrete
- Concrete
- Structural Steel

Set includes

- R-RAWL-SC40 steel and concrete nailer
- 2 batteries
- Charger base
- AC power supply cable
- Operating and Safety manual



Product commercial data

Index	Fastener length range	Fastener type	Substrate	Dimensions	Fuel cell type	WEIGHT	Magazine capacity	Battery charge	Shots per charge	Noise level	Box weight	Outer weight	EAN
	[mm]			[mm]		[kg]				[dB]			
R-RAWL-SC40	15 - 40	Round head pin	Concrete C20/25 - C50/60	370 x 420 x 108	GP2	3.5	40	2	4000	92	8.54	17.09	5906675271798