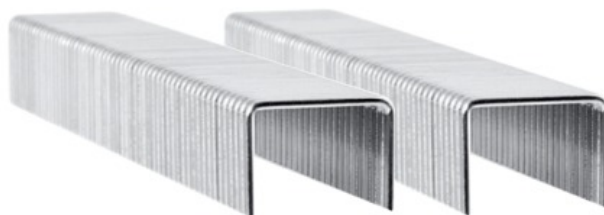


RT-KSS140 Staples RL 140

Flat wire staples; Professional line; Type 140; Ideal for working with insulation material and thin plastic



Product information

Features and benefits

- Wide 1.25mm flat wire staple provides lack of damages whist installing delicate materials
- Made of tempered wire, it is not bent when applied to hard surfaces
- Galvanized corrosion-resistant surface

Applications

- Professional wide staple for roofers designed for repairs and construction work

Base materials

- Timber
- Oriented Strand Board
- Plasterboard
- Timber
- Wood
- Plywood

Corresponding products

- RT-KGR0011 Hammer Tacker, 6-10 mm
- RT-KGR0014 Hand stapler - Trade, 6-10 mm
- RT-KGR0024 Hand stapler - 3 in 1, 6-14 mm



Product commercial data

Index	Type	Height	Length	Depth	Box	Outer	Box weight	Outer weight	EAN
		[mm]	[mm]	[mm]	[pcs]	[pcs]	kg	kg	
RT-KSS14006	RL140	6	10,5	1.25	1250	6	0.82	9.82	5391512821579
RT-KSS140061	RL140	6	10,5	1.25	1000	6	1.20	4.80	5906675332345
RT-KSS140065040	RL140	6	10,5	1.25	5040	6	5.45	5.45	5391512826130
RT-KSS14008	RL140	8	10,5	1.25	1250	6	0.94	11.33	5391512821586
RT-KSS140081	RL140	8	10,5	1.25	1000	6	1.40	5.60	5906675332352
RT-KSS140085040	RL140	8	10,5	1.25	5040	6	6.50	6.50	5391512821654
RT-KSS14010	RL140	10	10,5	1.25	1250	6	1.07	12.83	5391512821593
RT-KSS140101	RL140	10	10,5	1.25	1000	6	1.60	6.40	5906675332369
RT-KSS140105040	RL140	10	10,5	1.25	5040	6	7.50	7.50	5391512821661
RT-KSS14012	RL140	12	10,5	1.25	1250	6	1.21	14.54	5391512821609
RT-KSS140121	RL140	12	10,5	1.25	1000	6	1.40	5.60	5906675332376
RT-KSS140125040	RL140	12	10,5	1.25	5040	6	8.66	8.66	5391512821678
RT-KSS14014	RL140	14	10,5	1.25	1250	6	6.71	80.55	5391512821616
RT-KSS140141	RL140	14	10,5	1.25	1000	6	1.50	6.00	5906675332383
RT-KSS140145040	RL140	14	10,5	1.25	5040	6	9.78	9.78	5391512826147