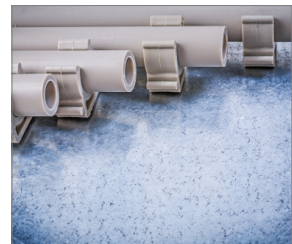


# [English]: R-SC40II-XL1 Osadzak gazowy do betonu i stali - Rawlcase

Gas powered nailer for steel and concrete



## Certificate



## Product information

### Features and benefits

- Pin range from 15mm to 38mm provides wide range of application
- Simplified depth adjustment design provides the end user with easy but accurate depth of drive control
- Removable magnetic nose tip for attaching metal clips and ceiling hangers. User can safely and comfortably perform in all overhead applications
- Compact and ergonomic design allows the operator to achieve great accessibility and freedom of operation
- Rear loading lightweight plastic magazine with a capacity of 30 pins provides durability and accessibility
- Sequential firing mode for operators safety and fixing precision

### Applications

- Cable conduits and wires installation
- Applicable for fixing steel and aluminium profiles in drywall structures
- Installation of all types of M&E clips and clamps

### Corresponding products

- R-KNC plastic collated concrete pins with fuel cells
- R-KSC plastic collated pins for steel with fuel cells
- R-GP5 Fuel Cell for use with R-RAWL-SC40II
- R-SC40-MW-25 metal washer

### Base materials

- Concrete C20/25-C50/60
- Concrete Slab
- Unreinforced concrete
- Concrete
- Structural Steel

### Set includes

- R-SC40II Gs powered nailer
- 1 battery
- Charger base
- Operating and Safety manual
- Safety glasses and ear plugs



## Product commercial data

| Index        | Fastener length range | Substrate                | Shots per charge | Fastener type  | Dimensions  | WEIGHT | Fuel cell type | Magazine capacity | Battery charge | Noise level | Box weight | Outer weight | EAN           |
|--------------|-----------------------|--------------------------|------------------|----------------|-------------|--------|----------------|-------------------|----------------|-------------|------------|--------------|---------------|
|              | [mm]                  |                          |                  |                | [mm]        |        |                | [nail]            |                |             |            |              |               |
| R-SC40II-XL1 | 15 - 38               | Concrete C20/25 - C50/60 | 8000             | Round head pin | 395x355x120 | 3.5    | GP5            | 30                | 0.5            | 92          | 9.40       | 9.40         | 5906675492414 |