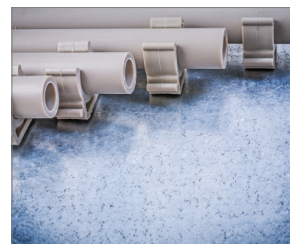


[English]: R-SC40II-XS1 Gazowy osadzak do stali i betonu opakowanie tekturowe

Gas powered nailer for steel and concrete

Certificate



Product information

Features and benefits

- Pin range from 15mm to 38mm provides wide range of application
- Simplified depth adjustment design provides the end user with easy but accurate depth of drive control
- Removable magnetic nose tip for attaching metal clips and ceiling hangers. User can safely and comfortably perform in all overhead applications
- Compact and ergonomic design allows the operator to achieve great accessibility and freedom of operation
- Rear loading lightweight plastic magazine with a capacity of 30 pins provides durability and accessibility
- Sequential firing mode for operators safety and fixing precision

Applications

- Cable conduits and wires installation
- Applicable for fixing steel and aluminium profiles in drywall structures
- Installation of all types of M&E clips and clamps

Base materials

- Concrete C20/25-C50/60
- Concrete Slab
- Unreinforced concrete
- Concrete
- Structural Steel

Corresponding products

- R-KNC plastic collated concrete pins with fuel cells
- R-KSC plastic collated pins for steel with fuel cells
- R-GP5 Fuel Cell for use with R-RAWL-SC40II
- R-SC40-MW-25 metal washer

Set includes

- R-SC40II Gs powered nailer
- 1 battery
- AC power supply cable
- Charger base
- Operating and Safety manual



Product commercial data

Index	Fastener length range	Substra- te	Shots per char- ge	Fastener type	Dimen- sions	WEIGHT	Fuel cell type	Magazi- ne capa- city	Battery charge	Noise le- vel	Box we- ight	Outer weight	EAN
	[mm]				[mm]			[nail]		[dB]			
R-SC40II-XS1	15 - 38	Concrete C20/25 - C50/60	8000	Round head pin	395x355x1 20	3.5	GP5	30	0.5	92	5.80	11.60	59066754 93749