

RPP-GUN-LONG Long Barrel Gun Foam Applicator

Professional applicator gun for polyurethane foams.

Product information



Applications

- The application of PU foam: installation of windows and doors, filling, sealing, insulation in the construction industry

Features and benefits

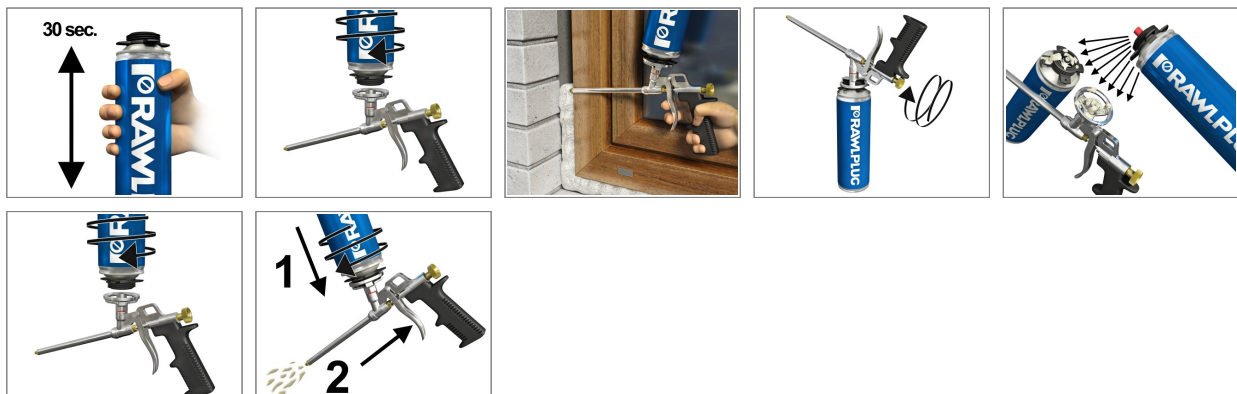
- Reliable tool for professionals enabling multiple applications of polyurethane foam.
- Solid construction
- Easy application
- Adjusting the flow out of the foam
- Simple maintenance
- Durability

Base materials

Approved for use in:

- Concrete
- Concrete Slab
- Solid Concrete Block
- Plasterboard
- Gypsum Fibreboards
- Aerated Concrete Block
- Ceramic Hollow Block
- Hollow Lightweight Concrete Block
- Wood
- Chipboard
- High-Density Natural Stone
- Masonry
- Hollow Brick
- Solid Brick
- Solid Sand-lime Brick
- Silicate Blocks
- Hollow Sand-lime Brick
- Vertically-perforated Clay Block
- Ceramic Hollow Blocks in high dimensional tolerance class TLMB

Installation guide



1. Wear protective gloves. Shake can vigorously (30 sec) to mix the ingredients and. Attach applicator gun and hold can upside-down during application.
2. After emptying can disconnect the gun from the can with PU foam and immediately screw the next can in order to continue working.
3. When work is finished, there is a possibility to leaving the can connected with the gun. To avoid accidental foam application block the handwheel.
4. Disconnect the gun from the can with PU foam. Spray basket of gun using Rawlplug PU Foam Cleaner.
5. To avoid foam curing inside the gun connect the can with the gun - screwing it into the basket of the gun.
6. To clean the gun connect the can with the gun - screwing it into the basket of the gun. Press the trigger several times until the gun is completely cleaned.
7. Once the foam cures in the gun, solvent will not dissolve it. Never use water to clean the gun. Cured foam may damage the gun. It can be removed mechanically. When foam cures in gun unscrew the regulation handwheel and remove the needle.
8. Clean the needle with non-abrasive product. Grease the needle before placing it in the gun.
9. Thoroughly dry all cleaned surfaces.

Product information

1. Wear protective gloves. Shake can vigorously (30 sec) to mix the ingredients and. Attach applicator gun and hold can upside-down during application.
2. After emptying can disconnect the gun from the can with PU foam and immediately screw the next can in order to continue working.
3. When work is finished, there is a possibility to leaving the can connected with the gun. To avoid accidental foam application block the handwheel.
4. Disconnect the gun from the can with PU foam. Spray basket of gun using Rawlplug PU Foam Cleaner.
5. To avoid foam curing inside the gun connect the can with the gun - screwing it into the basket of the gun.
6. To clean the gun connect the can with the gun - screwing it into the basket of the gun. Press the trigger several times until the gun is completely cleaned.
7. Once the foam cures in the gun, solvent will not dissolve it. Never use water to clean the gun. Cured foam may damage the gun. It can be removed mechanically. When foam cures in gun unscrew the regulation handwheel and remove the needle.
8. Clean the needle with non-abrasive product. Grease the needle before placing it in the gun.
9. Thoroughly dry all cleaned surfaces.

Product Code	Size
	D
	[mm]
RPP-GUN-LONG	600

Product commercial data

Product Code	Size [mm]	Quantity [pcs]			Weight [kg]			Bar Codes
		Box	Outer	Pallet	Box	Outer	Pallet	
RPP-GUN-LONG	600	1	6	60	0.52	3.1	61.2	5906675422091