

R-MFP-300 Mortar Fix-Pro | Rapid Cure

Mortar Fix-Pro is a rapid 2 part polyester ready component for repairing cracks and sealing joints.

Product information



Applications

- Repairing masonry joints and roof tiles
- Repairing chipped edges
- General repair work

Features and benefits

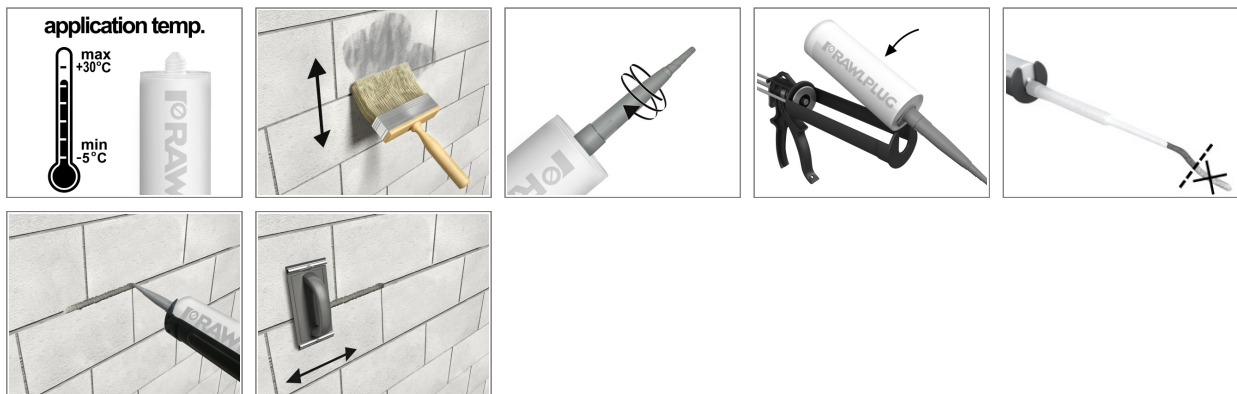
- Repairing mortar is resistant to changing weather conditions (from -5°C to +30°C) and UV radiation.
- Mortar can be applied to slightly wet surfaces.
- Saves time - no need for pre-mixing.
- Mortar is suitable for indoor and outdoor applications.
- Excellent adhesion to common building substrates.
- Styrene free for use indoors or outdoors (low odour).
- High surface abrasion resistance.
- Cures down to -5°C.
- Paintable & coatable.
- Bonds most construction materials.
- Fast curing 2-part polyester ready component.

Base materials

Approved for use in:

- Concrete
- Aerated Concrete Block
- Ceramics
- Solid Brick
- Wood
- Plasterboard
- Gypsum Fibreboards
- Masonry

Installation guide



1. The surface, that repair mortar will be applied on should be clean, free of dust, free of old seal and other substances that might weaken the adhesion.
2. Using the mixer nozzle provided ensure an even colour before application.
3. Shape and work the mortar within the working time.
4. A new nozzle is required once the working time is exceeded, as the mortar will harden inside the nozzle.
5. Remove excess of uncured mortar from surfaces, tools, hands using paper towel.
6. Remove cured mass from tools or surfaces mechanically.

Technical Data

Parameter		Value	Methods
Substrate temperature	-	-5°C to +30°C (with substrate <5°C, cartridge temperature must be ≥20≤30°C)	
Chemical base	-	Styrene Free Polyester	
Packaging	-	300 ml cartridge	
R-MFP-300-GREY-UK			
Colour	-	grey	
R-MFP-300-SAND-UK			
Colour	-	sand	

Parameter		Value
Storage temperature	[°C]	+5 ÷ +25
Storage	[month]	18
Storage conditions	-	upright position in an originally closed container
		dry, cool and well-ventilated place away from direct sunlight and other sources of heat and ignition
		storing the product in conditions other than recommended may shorten the shelf-life significantly.

Substrate temperature	Curing time*	Working time
[°C]	[min]	[min]
30	20	2
20	45	5
15	60	8
10	80	12
5	120	20
0	180	40
-5	360	60