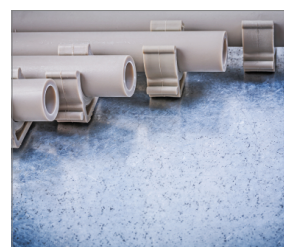


# R-RAWL-SC40II Gas powered steel and concrete nailer

Gas powered nailer for steel and concrete

Certificate



## Product information

### Features and benefits

- Pin range from 15mm to 38mm provides wide range of application
- Simplified depth adjustment design provides the end user with easy but accurate depth of drive control
- Removable magnetic nose tip for attaching metal clips and ceiling hangers. User can safely and comfortably perform in all overhead applications
- Compact and ergonomic design allows the operator to achieve great accessibility and freedom of operation
- Rear loading lightweight plastic magazine with a capacity of 30 pins provides durability and accessibility
- Sequential firing mode for operators safety and fixing precision

### Applications

- Cable conduits and wires installation
- Applicable for fixing steel and aluminium profiles in drywall structures
- Installation of all types of M&E clips and clamps

### Corresponding products

- [English]: R-SC40II-XS1 Gazowy osadzak do stali i betonu opakowanie tekturowe
- [English]: R-SC40II-XL1 Osadzak gazowy do betonu i stali - Rawlcase

### Base materials

- Concrete C20/25-C50/60
- Concrete Slab
- Unreinforced concrete
- Concrete
- Structural Steel

### Set includes

- R-SC40II Gas powered nailer
- the number of batteries depends on the version
- AC power supply cable
- Charger base
- Operating and Safety manual

