

The special drill bit shape designed to provide quick and trouble-free installation in metal constructions made from cold formed sections

# PACKAGING

## FEATURES AND BENEFITS

Carefully thought out, additionally strengthened the construction resulted in exceptional durability packaging that cannot be overcome even by long transport.

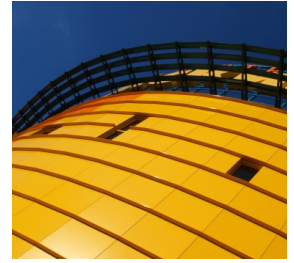
The B-pack bags represent a unique type of Rawlplug packaging, since their transparency makes it possible to become perfectly familiar with the contents, while the design allows for both hanging and standing display arrangement

The B-pack packaging comes in three variants. THE FIRST PACKAGING VARIANT is intended for products representing the brand's basic range, including e.g. the UNO, FX or 4ALL fixings. THE SECOND VARIANT, representing the offer dedicated to do-it-yourselfers, comprises small packs of universal fixings, composed of sets of different most popular products used at every construction site, in households or in workshops, in a single B-pack. And last but not least, THE THIRD VARIANT comprises solution kits dedicated to specific applications, supplied in B-pack bags. They contain products necessary for installation of specific pieces of equipment, such as washbasins, toilets, shelves or TV sets.

The information provided on the label as well as the large photo of the product's intended application enable customers to make an intuitive choice, making the B-pack an ideal packaging for cross-merchandising sales, as they are displayed in close proximity to the fixtures for which the given Rawlplug solution is intended. All these advantages make the B-pack irreplaceable wherever you intend to recommend ready-to-use product sets to customers and present them in a complementary manner, matching their respective needs, thus creating a professional and comprehensive offer.

## KIT CONTENTS

Size	Quantity
------	----------



# PRODUCT

## FEATURES AND BENEFITS

---

Coloured polyester protective coating with a thickness of 45-50 um (RAL, NCS, RR), provides additional protection against corrosion. Various colours available to suit all metal sheet variants. UV stabilizers ensure colour quality over a long period of use.

---

Hardened surface of the thread (flexible core). Corrosion resistant zinc coating of thickness not less than 12 um. The shape of the thread and its height is closely related to the intended use of self drilling fixing into steel construction.

---

Self vulcanizing EPDM washer. Temperature and UV resistant. The special shape of the washer ensures proper seating of the sealing material on the outer cladding material fixture which guarantees a proper seal.

---

The drill bit is designed to provide quick and trouble-free installation in the steel. Sharp point of the drill prevents movement of the surface of the fixture.

---

## PRODUCT COMMERCIAL DATA