

R-S1-NW R-NW NUT AND WASHER



R-S1-NW

PACKAGING

FEATURES AND BENEFITS

Each packaging features two highly functional solutions: the Ziploc type re-sealable zipper and the sturdy upper packaging section. This allows for the bag to be opened and closed multiple times, provides for secure storage of products for a long time, and facilitates display by preventing the bag from folding.

Depending on the product type, and its weight in particular, the Rawlplug comes in two standard thickness versions. All this to ensure durability and strength of our packaging in transport, the highest quality of product display, and ultimately also long-lasting storage.

The bags are made entirely of low-density polyethylene, which makes them suitable for recycling and reduces the related purchase costs



A (mm)
65 X 130

B (mm)
80 X 145

C (mm)
95 X 165

D (mm)
95 X 220

E (mm)
145 X 220

F (mm)
145 X 290



PRODUCT

FEATURES AND BENEFITS

DIN 934 Hex Nut is the most widely used, used in all areas of industry, agriculture and construction.

DIN 934 Hex Nut is the most widely used, used in all areas of industry, agriculture and construction.

Intended for a complete set of bolts, screws and hair-pins when performing various threaded connections

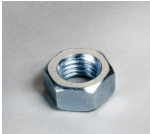
Utilize for increasing the bearing surface of the fastening and reduce the pressure on the structural element



BASE MATERIALS

APPLICATIONS

PRODUCT COMMERCIAL DATA ▼



Product Code	Material	Coating type	Diameter	Diameter	Thickness	Quantity		Quantity		Bar Codes
			[mm]	[mm]	[mm]	[pcs]		Box	Outer	
R-S1-NW-M8/20	Steel	White zinc plating	8.4	16	1.6	20	True	5	30	5010445200083
R-S1-NW-M10/10	Steel	White zinc plating	10.5	20	2	10	True	5	30	5010445200106
R-S1-NW-M12/10	Steel	White zinc plating	13	24	2.5	10	True	5	25	5010445200120
R-S1-NW-M16/6	Steel	White zinc plating	17	30	3	6	True	5	25	5010445200168
R-S1-NW-M20/3	Steel	White zinc plating	21	37	3	3	True	5	25	5010445200205
R-S1-NW-M6/20	Steel	White zinc plating	6.4	12	1.6	20	True	5	30	5010445200069