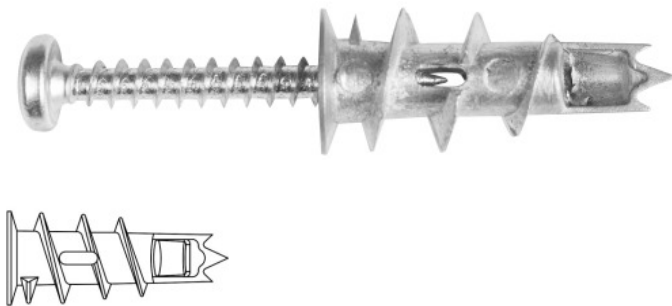


## DRA-02 Metal self-drill fixing for drywall

A self-drilling light-duty metal fixing for use in plasterboard sheets.



### Product information

#### Features and benefits

- Recommended for fire resistant application.
- Flange prevents accidental push through in plasterboard.
- Can be used in single and double thickness plasterboard.
- Short length ideally suited for dry lined walls.
- No drill required - simply pierce paper skin and screw home.
- Ideal for use with either a power or manual Pozidriv screwdriver.
- Must only be used with screws provided.

#### Applications

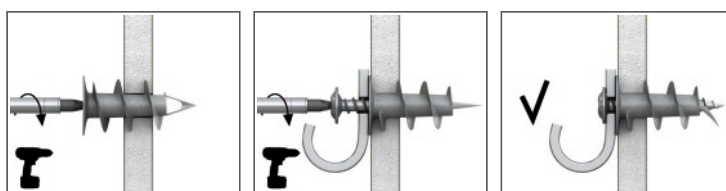
- Fixing electrical boxes, sanitary ware, cable trunking, etc.
- Shelves and bathroom accessories on standard plasterboard
- Ideal for installation of sockets, light switches and other electrical fittings
- Fixing light shelving, brackets and hooks
- Timber or metal battens
- Pictures

#### Base materials

##### Suitable for use in

- Plasterboard
- Gypsum Fibreboards
- Chipboard

### Installation guide



1. Using a PZ2 screwdriver, push fixing point firmly into the board until thread engages.
2. Maintaining a firm pressure, screw in fixing until flush with the base material.
3. Place fixture in position, insert screw and tighten until secure.

## Product information

Product Code	Plug		Screw		Fixture	
	Diameter	Length	Diameter	Length	Max. thickness	Hole diameter
	d	l	D	L	t <sub>fix</sub>	d <sub>f</sub>
[mm]						
R-DRA-02	13	31	-	-	-	-
R-DRA-02PLUS	13	31	4,5	34	12	5

## Installation data

Size	DRA-02 (PLUS)		
Fixing diameter	d	[mm]	13
Min. substrate thickness	h <sub>min</sub>	[mm]	9.5
Min. installation depth	h <sub>nom</sub>	[mm]	9.5
Min. spacing	s <sub>min</sub>	[mm]	35
Min. edge distance	c <sub>min</sub>	[mm]	35

## Basic performance data

Substrate	Plasterboard min. 9.5 mm		Plasterboard min. 12.5 mm	
CHARACTERISTIC LOAD F <sub>Rk</sub>				
DRA-02 (PLUS)	[kN]	0.15		0.19
DESIGN LOAD F <sub>Rd</sub>				
DRA-02 (PLUS)	[kN]	0.06		0.08
RECOMMENDED LOAD F <sub>rec</sub>				
DRA-02 (PLUS)	[kN]	0.04		0.06

## Product commercial data

Product Code	Plug	Screw	Quantity [pcs]			Weight [kg]			Bar Codes
	Diameter [mm]	Length [mm]	Box	Outer	Pallet	Box	Outer	Pallet	
R-DRA-02	13	-	100	3200	76800	0.42	13.5	354.1	5906675135823
R-DRA-02PLUS	13	34	100	1600	38400	0.67	10.7	285.7	5906675235271